



XTRAX

XTRAX SHORTS

Presentations about new work available for touring
in 2017

Saturday, 17 September 2016

10:00 – 11:45

Venue: The Drill House, Great Yarmouth

Join in the conversation on Twitter:

#OutThereFest | #XTRAXshowcase | #XTRAXShorts

@xtraxarts / @SeaChangeArts

The XTRAX / Out There showcase is supported by:



Supported using public funding by
**ARTS COUNCIL
ENGLAND**



XTRAX Shorts 2016

We are delighted to be taking our popular brand of artists pitching to the Out There Festival Showcase for the very first time.

XTRAX Shorts is designed to give artists an opportunity to present new outdoor projects in development in a concise format and in a supportive environment, and to give showcase delegates a sneak preview of projects that are hoping to reach production or tour in the next season.

For this first edition of XTRAX Shorts at Out There, the line-up consists of 11 artists and companies selected specifically to offer delegates work of a variety of scales and styles, including work from culturally diverse, and Deaf and disabled companies. Most of the presentations are from UK companies but we are pleased to be able to include a selection of new projects from artists from France and Spain.

The following pages will introduce you to all of the artists presenting at XTRAX Shorts this year as well as those we were unable to invite this time. We hope this booklet will be a useful reference for your work for long after the showcase has ended.

Thank you to all the artists who are sharing ideas with us, and to Lucy Medlycott from ISACS (Irish Street Arts, Circus and Spectacle network), our Chair for XTRAX Shorts this year. We are grateful to Arts Council England for supporting this programme through Grants for the Arts.

We hope you will find the presentations of interest and we look forward to hearing your feedback.

The XTRAX Team

XTRAX SHORTS PRESENTING ARTISTS SCHEDULE

SATURDAY 17 SEPTEMBER 2016

10:00-10:25 Tea, Coffee, and Networking

10:30-11:25 XTRAX Shorts: Companies pitching about new projects which will tour in 2017. Chaired by Lucy Medlycott, Irish Street Arts, Circus and Spectacle Network (ISACS)

Running order:

Cocoloco – *Willy and Wally*

C-12 Dance Theatre – *First Encounters that last forever*

Daryl Beeton & Nicola Miles-Wildin - *Bingo Lingo*

Etta Ermini Dance Theatre – *Culinary Duel*

The Fabularium Ltd. – *Reynard the Fox*

Sonia Sabri Company - *Mughal Miniatures*

Bikes&Rabbits – *These Books are Made for Walking* (France/UK)

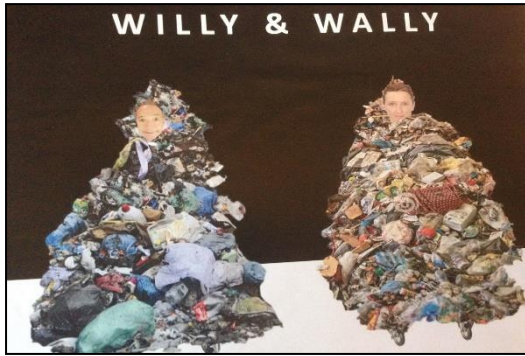
Eric MacLennan – *Drop In The Ocean*

Light the Fuse & Scribbled Thought – *The Playground of Dreams*

The Miraculous Theatre Company – *Romantic Botanic*

Companya Obskené - *Manifiesta* (Spain)

11:25-11:45 Meet the delegates and Networking: all delegates are invited to briefly introduce themselves. We invite you to join us for a tea and coffee whilst you meet other delegates and colleagues before the programme starts.



Cocoloco

Helen Statman
Co-Artistic Director
Elliotts Dairies,
109 Shaklewell Lane, London, E8 2EB, UK
T: +44 (0)207 254 0376
E: helen@cocoloco.co.uk
W: www.cocoloco.co.uk

From a world where Alice in Wonderland meets The Shining, performance troupe **Cocoloco** presents raucous, hilarious and ever so slightly bent theatre. This is cabaret performance and street theatre with a twist. Cocoloco's work has been described as "the high art of madness to perfection", as they delve into David Lynch's notebook and present Salvador Dali-esque, truly bizarre street theatre. Cocoloco brings anarchic, eye-catching, quirky and wildy funny peripatetic performance to theatre festivals throughout the world!

Willy and Wally

Two peripatetic talking rubbish tips. A Woman and a Man in two conical rubbish tips up to their necks. Their faces are lit by small lights and their voices are amplified. The tips look like large frocks. They are light and portable aluminium frames on wheels with a 'rubbish' surround. *Willy and Wally* are drowning in mountains of rubbish, resigned to the fact that they will soon be swallowed entirely.

They have amusing and poignant monologues and witty, edgy dialogue as well as talking a load of rubbish. The image of Winnie in Samuel Beckett's *Happy Days* is familiar and we acknowledge our debt to that masterwork as an appropriation and extension of that brilliant idea encapsulating our existential plight with the addition of the weighty moral and ethical arguments around climate change.

Willy and Wally's main beef is climate change denial: blame shifting, techno-optimism, hedonistic fatalism, Gaia theory, 'climate change fatigue' etc... It's a fabulous act for the street with the possibility of having a 'Speaker's Corner' feel as well as a clownish vaudevillian turn.

C-12 Dance Theatre

Adam Towndrow
Executive Producer
30 Bushberry Road,
London, E9 5SX, UK
M: +44 (0)778 225 1816
E: adam@c-12dancetheatre.com
W: www.c-12dancetheatre.com
Twitter: @C12DanceTheatre



Established in 2005, **C-12 Dance Theatre** create accessible, high quality and emotionally driven outdoor and indoor dance theatre works.

In 2012 C-12 won the Argus Award for Artistic Excellence with *Trolleys* (outdoor work) and in 2015 C-12 won the Organisation Impact award for engaging the local community and the professional dance community through creating accessible opportunities to watch, participate and connect with dance.

C-12 continues to tour *Trolleys*.

First encounters that last forever

First encounters that last forever is an enriching, unexpected and memorable series of short movement performances that will pop up several times throughout a festival. Unlisted in the programme, three duets will create unannounced moments of love, joy, and happiness, which will take place within and amongst the general public.

All duets have a theme of *First encounters that last forever*, interpreted by 3 highly experienced, diverse and exciting choreographers. There are one male and female duet and two same sex duets. Each duet lasts 5 minutes and is repeated twice at each festival. The festival and C-12 Dance Theatre will select appropriate areas and times to programme the duets. The performance will happen and disappear as if it never happened. (Small scale, Dance Theatre)

Artists involved:

Choreographer 1: Corey Baker – New Zealand based choreographer, outdoor credits include: *Phone Box & Hakka Day Out*. Corey is an enthusiastic and passionate artist who creates high quality engaging work for all ages. His performance career includes working with Shaun Parker on the creation of *Spill*, who choreographed *Trolleys*.

Choreographer 2: Sally Marie – New Adventures Choreography Award 2013, The Children's Choreographer Award 2014, Best Dance Production nominee by Welsh Theatre Awards. Sally creates dynamic, moving and beautiful pieces of dance that are focused on story telling and relationships.

Choreographer 3: Annie-Lunnette Deakin-Foster – Outdoor Credits: Choreographer for *Market Stall, The Van Man*, Assistant Choreographer for award winning *Trolleys*, New Adventures Choreography Award finalist. Annie creates highly technical, accessible and beautiful contemporary movement.



Daryl Beeton and Nicola Miles-Wildin

Daryl Beeton

Co-Director

4 Southstand Apartments,
Highbury Stadium Square,
London, N5 1EY, UK

T: +44 (0)796 183 8919

E: darylbeeton@icloud.com

W: www.darylbeeton.com

Twitter: @DarylBeeton

Daryl Beeton and Nicola Miles-Wildin have worked together on various projects since 2007, exploring ways to make outdoor work accessible and inclusive. Through their collaborations at Graeae, Paralympic opening ceremony, and Kazzum they have created outdoor shows together. *Bingo Lingo* will allow them to experiment with a new form of active engagement within local communities of the festivals they visit.

Nicola is best known for her role as Miranda in the Paralympics Opening Ceremony, London 2012. She is an actor and director who has worked with many companies.

Daryl has worked extensively within the Theatre, Disability and Young People's arts sector for the last 20 years. A Director and Performer, Daryl works for a variety of companies and was Artistic Director at Kazzum between 2005 – 2015.

Bingo Lingo

Over 3 million Britons play bingo in halls and more than 100 million play the game live and online around the world. The characters, Beryl and Cyril, love the excitement of Bingo and the joy it brings to many. They want to make Bingo an Olympic sport, so they decide to play it on a Paralympic scale in order to share their enjoyment and create a diverse, fun and social engaging outdoor intervention that brings strangers together to play *Bingo Lingo*.

The performance is based around 4 large scale *Bingo Lingo* playing cards which are inspired by the Comedy Carpet in Blackpool. Each card is designed with disability focused 'bingo calls'.

Bingo Lingo is Las Vegas meets Blackpool pier. Beryl and Cyril arrive in style on over the top elaborate oversized mobile machines designed by Mike Pattison. One contains a large mechanical bingo ball machine and the other is decked out with the most amazing prizes. The machines are designed around power wheelchairs enabling the characters to move easily around the festival site and playfully interact with the audience.

Prior to the games of bingo, Beryl and Cyril parade around the festival site, improvising and interacting with the audiences and collecting bingo players along the way ready to play the game. Their entrance into the performance space starts with teaching the audience the *Bingo Lingo Winning Dance Routine*, a simple inclusive dance that the audience are invited to perform when a game of bingo is won.

Beryl and Cyril use the oversized *Bingo Lingo* playing cards on the ground and invite the teams of players to get ready, eyes down and the game begins.



Etta Ermini Dance Theatre

Etta Ermini
Artistic Director
27a Mundania Road,
London, SE22 0NH, UK
T: +44 (0)759 570 7622
E: ettaermini@yahoo.com
W: www.ettaermini.com
Twitter: @EttaErmini

Founded in 2005, **Etta Ermini Dance Theatre** in 2005 aims to explore and animate the human condition through cross art form collaboration and storytelling. Working in the UK and internationally, EEDT creates both indoor and outdoor works, with the productions *Roadworks*, *Picnic* and *Bar Story* touring constantly since 2012 and currently securing performances for 2017 and 2018. It is committed to creating engaging and accessible works with diverse appeal and interdisciplinary approaches. Etta lectures in the dance department at Kingston University.

Culinary Duel

Culinary Duel is a 25-minutes outdoor dance theatre performance with the topic of TV cookery shows aimed at families and young children. In this dance theatre show, two chefs engage in a culinary duel with an animatronic cooker spiced up with high-energy dance & acrobatics, audience interaction, storytelling, and humour. Families and children are encouraged to participate in the preparation process, to stir, sieve, knead and sprinkle ingredients and to help the chefs to catch their disobedient kitchen appliance. The cooker will at the end make an enormous load of popcorn, which will be distributed among the audience.

The company's set designer Mike Pattison will develop the animatronics and mechanics of the cooker. Two professional dancers with in- and outdoor experience and proficient in contemporary, character work and acrobatics will be the performers. The company's aim to expand its knowledge in audience interaction in order to address a wider audience and more specifically children, which is something it hasn't yet explored in depth. Also, the use of animatronics to stimulate audience interaction and extract the absurd of cookery shows and the collaboration with an experienced set designer will push the boundaries of their work.



The Fabularium Ltd.

Joshua Patel
Co-Director
54 St. Christians Road, Cheylesmore,
Coventry, CV3 5GX, UK
T: +44 (0)753 145 3810
E: joshua@fabularium.co.uk
W: www.fabularium.co.uk
Twitter: @Fabularium

The Fabularium Ltd. is a theatre company that produces outdoor family theatre in the form of shows set upon a wooden cart and walkabout animations. The company utilises a unique medieval aesthetic to present a strong visual performance that uses mask work (in the form of animal headpieces and half-mask), puppetry, physical theatre and live music. They are currently touring their second small scale production, *Reynard the Fox*.

Reynard the Fox

Reynard the Fox is a new small scale touring production that has been devised from the traditional folk tale of the same name. This show features all of The Fabularium's trademark techniques, using puppets made by Andrew Kim (Thingumajig Theatre), a new set that doubles as a pull-along-cart, built by Marcus Rapley (MJR Theatre Services) and designed by Jonny Dixon, and the show received external direction from Niki McCretton (Stuff and Nonsense Theatre Company) and Sonia Ritter (the Lions part).

Reynard the Fox utilises traditional storytelling methods with strong physical characters to portray a visual spectacle of animals in the woodlands upon a classic wooden stage. The piece is soundtracked with original live music, using prominent three-part harmonies and underscoring to provide an enveloping atmosphere in the outdoors that carries across audiences. The combination of a vibrant set design, distinct animal headpieces and powerful vocals and music make *Reynard the Fox* a solid piece of entertaining outdoor theatre that captivates the attention of the public in both theatrical and less-accessible spaces, engaging with all ages and backgrounds.

This show requires no technical support, all musical accompaniment is acoustic and all performers use vocal projection. The show tours with three performers, and is contained within a van (LWB).

Sonia Sabri Company

Sonia Sabri
Artistic Director
Baithak House, 202,
Moseley Street, Digbeth,
Birmingham, B12 0RT, UK
T: +44 (0)121 622 3135
E: info@ssco.org.uk
W: www.ssco.org.uk
Twitter: @SoniaSabriCo



Sonia Sabri Company (SSCo) is one of the leading contemporary South Asian dance companies in the UK. The company has an international reputation for presenting Kathak dance in a contemporary context, without diluting its integrity.

Sonia Sabri Company is a dynamic company, which creates work relevant to modern audiences, that is inspired by Indian and British culture, and the rich possibilities that arise when they meet.

Mughal Miniatures

Mughal Miniatures is a new, outdoor international collaborative work from Sonia Sabri Company, which will showcase the best of the UK's diverse arts and artists. *Mughal Miniatures* will use dance, live music, theatre, puppetry and intricate costuming and set design, creating living versions of Indian miniature paintings with a twist!



Bikes&Rabbits

Alice Allart

Performer

9 Rue du Château,
06300 Nice, France

M: +33 (0)770 395 423

E: alice.allart@hotmail.fr

W: www.bikesandrabbits.com

Twitter: N/A

Bikes&Rabbits is a contemporary circus company created in London in 2012 and has been working between France and the UK since 2014. Bikes&Rabbits plays with different ways of narration within circus, using bespoke props and apparatus to create a new circus vocabulary.

The company's creations include:

Triptych (2014) - indoors

Something Special (2015) – for outdoors

These Books are Made for Walking (2016) – indoors, outdoors, library

Killing Me Softly (currently being devised)

These Books are Made for Walking

The story begins in an unlikely library, with thoroughly filed books, arranged by a meticulous bibliophile. When a book opens, everything tips over. The library transforms into a wobbly, precarious and musical sculpture. One character appears from in between the books, the other arrives from who knows where. A permanent tension between 3 characters never in balance, perched on rickety ladders that crack.

It shouldn't work but it does.

It's the stories in the books that disrupt reality.

Superstitious people, beware...

These Books are Made for Walking is a contemporary circus show without traditional circus props including the disciplines of balancing on objects, slack rope and object manipulation.

The original music is played live by a musician part of the action, sitting 3m high on a moving ladder. Each part of the structure becomes an instrument.

The narrative of the show underlines the universal human relationships through unstable situations.

A fourth person joins the trio, an audience member who will be the essential counterweight in the story.

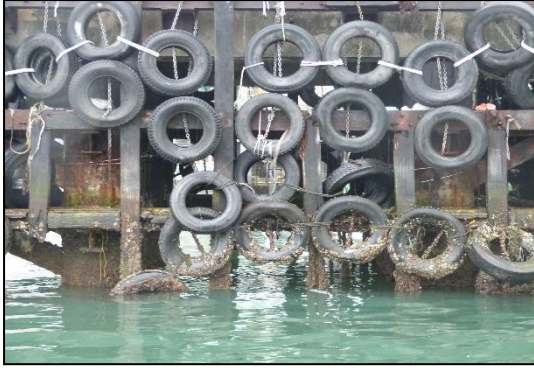
Creative team

Performers: Alice Allart, Fabrice Dominici, Patrice Colet

Director: Yann Ecauvre (Cirque Inextremiste)

Sound Design: Patrice Colet

Lighting Design: Christopher Mc Ghee



Eric MacLennan

Eric MacLennan

Director / Lead Artist

62 Chestnut Rise, Plumstead Common,
London, SE18 1RL, UK

T: +44 (0)208 855 3404

E: eric_maclennan@hotmail.com

W: www.ericmaclennan.com

Twitter: @MyBedroomVoyage

Eric MacLennan has been making innovative performance work for nearly thirty years. During this time, he has worked as an actor and director with many world class companies including DV8 Physical Theatre; Royal National Theatre Studio; Station House Opera; and the Young Vic. Over the last ten years, he has been creating his own distinctive work whose practice occupies a unique space somewhere between theatre, movement and the visual arts.

Drop In The Ocean

The waters are rising. What can we do? Can we make a difference? - or would that simply be a drop in the ocean, but... the waters are getting higher, so...we need a drop in the ocean! Could a large number of small gestures make a big difference? If we all do our bit, small things can be the difference. Each and every drop helps!

Drop In The Ocean (DITO) starts by asking you to send a message in a bottle. Tell the performers a small thing you are doing and invite the receiver of the message to do something similar. These bottles are not dropped into the sea, but are exchanged across ponds in parks; across local swimming pools etc., in preliminary workshop events as the project develops. Other bottles are sent electronically and by other means at a later stage.

A large scale participatory project that celebrates our nautical connections with the rest of the world, that culminates in a performance during various festivals including the Tall Ships Festival 2017.

A performance all about water. A performance that celebrates water and our strong connections to it. A performance that uses water power. Music and lights powered by water and people! Water is fundamental to our life. We ourselves are more than 60% water. Much of our symbolism and ritual makes use of this basic element. *Drop In The Ocean* will celebrate water with an unforgettable truly immersive theatrical experience! Please bring an umbrella!



Light the Fuse and Scribbled Thought

Steph Connell
Company Director / Producer
14 Keats Avenue,
London, E16 1TW, UK
T: +44 (0)785 087 0119
E: steph@scribbledthoughttheatre.co.uk
W: www.scribbledthoughttheatre.co.uk
Twitter: @Scribbled_Tweet | @FuseTheatre

Light The Fuse charge everyday spaces with explosive visual and physical elements to surprise and captivate audiences of all ages. Their shows are character driven, with a strong narrative and aim to make audiences reconsider their usual environments and see the fun in the mundane. The company premiered with *Full Stop*, originally commissioned by Lyric Hammersmith, Watford Palace, GDIF, and Latitude. The show toured nationally in 2014 and 2015.

The Playground of Dreams (working title)

The playground is a constant presence in our lives: from discovering it as a toddler, through to mastering the monkey bars, from a first childhood kiss to drunken student days rediscovering the swings, to reliving our own youth as a parent or grandparent. The equipment and our bodies may change, but our imagination never lets us down.

Light The Fuse presents a new piece inspired by the playgrounds of our past and present. An explosive series of scenes and characters, against an atmospheric soundscape, that explore the seven ages of man told through this iconic feature of our lives.

The Playground of Dreams will be a medium scale piece of work involving: - 4 performers, a mix of circus, physical theatre, dance, and comedy. Audience interaction – a purpose built piece of equipment based on a climbing frame with a slide, monkey bars and potential for aerial rigging. Approximately 30 minutes long, it will be suitable for audiences aged 4 to 104. The lead director will be Gemma Fairlie (Artistic Director of Light the Fuse and Associate Director with the RSC and Royal Court). The company will collaborate with movement director Neil Bettles (Frantic Assembly, Harry Potter and the Cursed Child) who previously co-directed *Full Stop*. The cast will include two previous collaborators with a high level of circus skills: Maria Gray and Luke Chadwick Jones, and 2 new members.

This is a new show at the beginning of its creative journey. Discussions are being had with designers and circus riggers about what the key piece of equipment will be, and R&D is scheduled to happen late 2016/ early 2017.



The Miraculous Theatre Company (MTC)

Barnaby Gibbons

Artistic Director

Flat 3, Ekarro House, 49A Guildford Road,
Stockwell, SW8 2DT, UK

T: +44 (0)207 622 3380

E: miraculoustheatre@gmail.com

W: www.miraculoustheatre.com

Twitter: N/A

Miraculous Theatre Company is an outdoor theatre company producing high quality theatre for the public realm. They mix stories, poetry, and philosophy, and deliver them through intimate, small-scale productions. The company's aim is to widen the audience experience by offering new areas of theatrical engagement, celebrating the extraordinary and championing the absurd. Their work focuses on enabling people to connect imaginatively with each other, their communities and their public spaces.

Romantic Botanic. A series of bespoke guided tours delving into the secret love-life of plants

For thousands of years, humans have been developing the art of seduction, plants have been doing this for millions!

Romantic Botanic is a devised, site specific, interactive roving theatre piece which delves into the secret love life of plants. Mixing poetry and science the company plunges you into the sensual world of *Romantic Botanic*, a profound and hilarious venture into the plant realm. Set in a park, garden or street they use storytelling, physical theatre, special effects, and comedy. They use the natural environment as their decor, augmenting this with effects such as pollinating trees, squirting shrubs and singing bushes.

The team includes Paschale Straiton from Red Herring productions, Roger Hartley from the Bureau of Silly Ideas and Barnaby Gibbons from Le Phun Theatre (France). They offer up to three visits a day lasting about 45 minutes for audiences of up to 50 people (environmental factors may allow this number to vary).

Because of the bespoke nature of the piece, every show is unique. Each park, garden or Town Centre has its own story. Site visits and specific research based on these visits ensures the company tells their host venue's tale, celebrating its history, culture and most importantly its flora.

This show has already been performed as a work in progress project in Brixton January 2016 and a finished version over 4 days in Adelaide Australia in March 2016. A site visit and writing residency has taken place in Freemantle, W. Australia for performances scheduled for April 2017.



Companyia Obskené

Ricard Soler
Artistic Director
C/ Legalitat 49, 1, 1
08024 Barcelona, Spain
T: +34 (0)653 755 266
E: ricardsm@obskene.org
W: www.obskene.org
Twitter: @Obskene

Companyia Obskené was founded in 2008 to undertake the risk of innovative artistic projects. Since then, 12 shows have been presented and 5 awards received. The name “Obskené” refers to “obscene”, a word whose Greek root means off (ob-) and “stage” (-skene). Consequently, Obskené theatre shows on the stage what was formerly hidden behind the rear curtain, seeking to present “obscene”, shameless creativity.

Manifiesta

Manifiesta is a festive street show. It is a symbiosis of three artistic languages: circus, spoken word, and music. The text is a manifest displayed in different languages, that reclaims the public space, the sense of community, and collectiveness. The circus set is composed of four Chinese poles, one trapeze, and a circuit of zip-lines in order to defend the manifest. The electronic music will transform the manifest into a party (fiesta in Spanish).

Manifiesta is a 40-minute show with a lot of energy where the main character is the audience. It brings the public into a sensation of ecstasy, it invites them to dance and to think on the beat of the manifest. The circus, by representing an esthetic of risk, makes us feel alive. The music is the art that allows our body expression. The spoken word articulates our discourse. The company presents you both a manifest and a party on the street.

The scenography consists of a stage with a horseshoe arch shape with a central stage where there is a trapezium and a DJ. In the laterals of the stage there are 4 Chinese poles. 4 zip-lines connect the technical tower with the stage. There are 2 screens for text projections. *Manifiesta* is a medium-large scale show: it is for an audience of 2500-3000 people.

Duration of the show: 40 minutes (+ 20 minutes of music + optional musical session afterwards)
Multi-language show | Show with fireworks and confetti

Co-production of Obskené and Fira Tàrrrega with the support of Subtopia (Sweden).

Crew

Artistic director: Ricard Soler i Mallo (Catalonia)
Set designer and technical director: Adrià Pinar (Catalonia)
Text: Jean-Frédéric Messier (Quebec)
Costume designer: Manon Guiraud (France)
Light designer: Hugo Dalphond (Quebec)
Choreographer: Anne Morin (France)

OTHER PROJECTS IN DEVELOPMENT

Index

Akademi South Asian Dance UK – *Paradiso: Man's Enduring Search for Perfection*

Avanti Display – *Full Circle*

Dizzy O'Dare – *Body of Wires*

Faceless Arts – *Driftwood*

Golden Youth Club – *Rainbow Nation* (South Africa)

Hayley Matthews / Ensemble Dance Co. – *Still in the City - Dawn*

Hikapee – *HOME*

Jordi L. Vidal Company – *La Rencontre* (Belgium)

Levantes Dance Theatre – *THE BAND*

Liberty Rocks Arts – *Marie Celestial*

Simone Riccio – *On Wheels*

The Feminist Mouse Circus – *The Feminist Mouse Circus*



Akademi South Asian Dance UK

Mira Kaushik OBE

Director

Hampstead Town Hall,

213 Haverstock Hill,

London, NW3 4QP, UK

M: +44 (0)207 691 3210

E: mira@akademi.co.uk

W: www.akademi.co.uk

Akademi champions and encourages excellence in the practice of South Asian dance in contemporary Britain. Through the production of innovative South Asian dance events in unusual places, they create work for artists and engage the widest possible public with an art form that, while rooted in classical tradition, is at the cutting edge of contemporary culture and a particularly British creative force. They are a local organisation with a global perspective, providing a range of education and community activities and are building pathways for progression in South Asian dance, both through direct provision and through influence. The company's overarching purpose is to support and promote the development of South Asian dance, dancers and dance makers in London and beyond.

Paradiso: Man's Enduring Search for Perfection

Paradiso: Man's Enduring Search for Perfection is a new 40-minute cross arts commission inspired by the final part of Dante's Divine Comedy and the astrological influences of the Navagrahas (nine planets) of Hindu mythology.

Dante, led by his beloved Beatrice through the planetary spheres to Heaven, is confronted en-route by the diverse spiritual inhabitants of the celestial world of the afterlife. They disorientate him at the same time as offering wisdom. It is a not an easy journey.

Produced by Akademi, *Paradiso* is directed by Hilary Westlake and choreographed by Jose Agudo, with costumes by Martina Trottman. It is performed by a cast of six dancers (combining South Asian and western contemporary disciplines) and two actor/singers, featuring a newly-composed music score by Bernhard Schimpelsberger and voice by Melanie Pappenheim.

A research and development period took place in March 2016 to explore how the original vision of an extended multi-part piece could be presented as a singular work.

Paradiso is designed to be a flexible show and is available for touring from the summer of 2017 onwards. It is initially a day time show for a family audience, however, it will also have a lighting design available for evening performances.

The company would like to have the opportunity to perform the show in a range of unusual sites in the UK and overseas. Suitable spaces include heritage gardens, pergolas, observatories, planetariums, field festivals, literature festivals, places of scientific interest and Areas of Outstanding National Beauty.



Avanti Display

Bill Palmer
Director
Hill House,
Trapp Lane, Simonstone,
Burnley, BB12 7QW, UK
T: +44 (0)128 277 8314
E: office@avantidisplay.co.uk
W: www.avantidisplay.co.uk

Avanti Display has been creating performances for almost 30 years. Originally started in 1987, it has developed into a company, producing and presenting a highly individual brand of comic surrealism across the UK and beyond.

6 Impossible Things (2013/16)

Rural Arts touring show 40 date tour 2014 now booking for Autumn 2016.

Reliquary

Supported by Without Walls, toured to four network festivals and two associate festivals over 2015/16. Showcased City of Wings Ypres April 2016. Rastatt May 2016. Now touring UK festivals.

Avanti XL

A retrospective of all Avanti shows still in Repertoire, now touring Coasters network.

Full Circle

The title *Full Circle* refers to Avanti taking a look at where we started, investigating the way the circle of audience is created and maintained whilst being transformed from a group of strangers into an audience who share a moment.

Making a front line and building the audience behind it is one of the first skills an outdoor performer learns, it was certainly one of the company's first lessons. At outdoor arts festivals these days it is often common for the audience to be waiting for the performance and whilst this can be easier for the artist some of the most rewarding performances I have seen or taken part in, have begun by stopping one person and building to many hundreds. *Full Circle* will be portable, make few or no demands on production, with the performers carrying all they need. The company also envisages a participation element with up to ten performers from the venue taking part. There will be no front or back in this performance, they will use the 'Full Circle' connecting the back row to the front row and the sides with the middle. Perhaps even turning it inside out, wrong way around.

Timetable

G4A R&D Approved

Residency at 101 Newbury confirmed in October 2016

Research element in 2017 (venue TBC)

Personnel

Bill Palmer, Pascale Straiton, Pete Finnegan, Dave Southall, Bryan Tweddle, James Macpherson



Dizzy O'Dare

Alana Jones
Co-Artistic Director
Seamonkey Port, Werburgh,
Vicarage Lane, Hoo, Rochester,
Kent, ME3 9TW, UK
M: +44 (0)797 473 9369
E: dizzy@dizzyodare.com
W: www.dizzyodare.com

Dizzy O'Dare is a contemporary circus and outdoor theatre company producing a wide range of work, which has toured extensively, delighting audiences across the globe. Latest work includes *Body of Wires* & *The Giant Balloon Show*, and they are about to start production of a new piece - *Rise* (Working title). The company are now the resident artists at SeaChange Arts, and are assisting with the Out There Festival and the Drillaz youth programme.

Body of Wires

Body of Wires is a 30 minute, medium-scale, outdoor tightwire and contemporary movement piece.

In a fusion of dance and circus, Dizzy O'Dare's trio of tightwire tribeswomen embark on a spellbinding journey to cleanse, heal and unite their tribe. The sisterhood meld water, smoke, earth, air and fire, in an elemental ritual, a bewitching blend of ground-up dance and double tightwire. Magic and music combine to conjure a show that is captivating, provocative and powerful from UK's leading tightwire company.

A visually striking piece, featuring the unusual pairing of double tightwires and an international all-female cast of wire walkers. *Body of Wires* was born out of a collaboration between Alana Jones (UK), Hanna Moisala (Finland) and Paula Quintas Santos (Spain).

The show, reworked in 2016, has performed twice in its current form. While the show was challenging to produce and 2 years in the making, the company is now very happy with the finished production and are keen to tour it far and wide in 2017.

Directed: Michael Imerson

Music: Craig Byrne

Costume: Abby Grewcock

Developed with the support of Arts Council England (both R&D phase and production period)

Co-produced by SeaChange Arts

Thanks to contributions from Robby Graham, Silvia Fratelli and Mimbire, and Lou Cope.



Faceless Arts

Bev Adams
Artistic Director
Unit E Fox Way,
Trinity Business Park,
Wakefield, WF2 8EE, UK
T: +44 (0)192 433 5985
E: bev@facelessco.com
W: www.facelessarts.co.uk

Founded in Wakefield, West Yorkshire in 1990, **Faceless Arts** has been producing professional and community co-created, socially concerned, visual, outdoor arts projects using mask and puppetry for over 25 years. The company has worked extensively across the UK and internationally, and is particularly adept at involving communities less well served in its projects.

Driftwood

Inspired by concern for the plight of thousands of refugees that are displaced due to war or poverty, and the rise in xenophobic tension, *Driftwood* uses an outdoor performance and visual arts workshop to explore how community's welcome newcomers and offer sanctuary in our towns and cities.

A typical *Driftwood* day is as follows:

Driftwood Community Visual Arts "welcome" workshop – 2 hours.

Exploring place and belonging, a 2 hr 'drop in' or 'sign up' visual arts workshop during which conversations around refuge and asylum ensue. Participants are encouraged to remain or return for the performance, to welcome the arrival of the *Driftwood* boat and its 'cargo'.

Driftwood Outdoor Arts Production – Promenade Performance – 40 mins

A driftwood boat with driftwood puppets sets sail through a town, city or festival and seeks a place to dock. The *Driftwood* performance comprises a striking visual non-verbal performance using skilled and sensitive puppeteers, set to an original pre-recorded soundtrack and live score created by vocal world music composer Maria Jardardottir.

Driftwood Welcome – up to 20 mins

As the *Driftwood* boat nears the workshop venue, the performers facilitate the workshop participants to welcome the driftwood refugees and provide sanctuary for them, thus concluding the performance. Should the community not feel able to welcome the boat and its' "people" at this time, the boat will continue to sail on until it is out of sight.



Golden Youth Club

Nomatlou Johannah Mahlangu
Managing Director
10681 Ext 3,
Winterveld, South Africa
M: +27 (0)832 444 238
E: thegoldenyouthclub@googlemail.com
W: www.goldenyouthclub.org

The Golden Youth Club is a registered non-profit organization project established in 2001 operating in South Africa, Winterveld. GYC is a young dynamic project with a passionate vision to make performing art more accessible to various audiences in South Africa and across the world. The mandate of the organization is to constantly explore new creative ways of bringing out the true essence of education in schools and also in communities. They always focus on issues that affect their learners in their daily lives, reflecting on them and turning thoughts into artistic performance –whether it's a song, a dance or a play. The company's aim is to convey that, regardless of where you come from, there is one language everyone can understand. We do not need to speak to the same tongue. Art sends the message to everyone, from one end of the globe to the other.

Rainbow Nation

The program presents dances and songs from all over South Africa and reflects the diversity of cultures. The group wants to show to the community, togetherness, vitality and the will to change in South Africa on stage. The artistic and musical quality of the program is overwhelming and has been considered in South Africa for a variety of awards and recognitions.

They will open the programme with the Afrofusion Dance, a process developed by the group dance, showing the facets of the cultural diversity of South Africa.

Tswana Dance: The Batswana are from the North West Province. Their dances are about relations between men and women, as well as about different animals belonging to Batswana

Sepedi Dance: The Sepedi belong to the "loud" ethnic groups in South Africa. This is a rain dance, it will be accompanied by the Dinaka, a flute made of animal horn.

Kwaito V / S Gumboots: "Kwaito" is the dance of today's youth.

Mzansi Zulu Dance: The Zulu are South Africa's strongest. Their dances show enormous energy - whether it be joy dances or dances to sad occasions. The Mzansi is danced mainly at births and weddings.

Seswati Dance: The dance shows how proud the AmaSwati are of their culture.

Umzingili Dance (Zulu): This war dance of Zulu dancing with sticks and shields. It expresses that the Rainbow Nation has overcome the violence.



Hayley Matthews / Ensemble Dance Co.

Hayley Matthews
Dance Maker and Performer
37 Nelson Street,
Norwich, NR2 4DW, UK
M: +44 (0)781 396 4134
E: hayleyjmatthews@hotmail.co.uk
W: www.vimeo.com/hayleymatthews

Hayley Matthews is a contemporary dancer, dance maker, and training Rolfer and founder of **Ensemble Dance Co.** Her work explores relationships with space, inside and outside. Hayley's work has been described as having grace and vulnerability, a sense of journeying, strength, and intuitiveness. Recent works include *HOME* and *Still in the City*. This work will be made in collaboration with MD Jon Ranger, recent works: MD for *The Lion King*, *Jesus Christ Superstar*, keys with Rick Astley and Vanessa-Mae.

Still in the City - Dawn

Still in the City - Dawn is an improvised and interactive contemporary dance and music work. The work is built from the ground and researches a new space, a new beginning, in which we are able to allow what happens outside of us filter in and be part of us, where we can let the city become part of us instead of becoming its victims; where instead of letting it bash us about, scare, shock, isolate us, we accept and live with it with grace.

It begins at dawn, in an outdoor place in the city, high up, with an eight-piece performance ensemble of three dancers and a five-piece classical ensemble, and builds this space with the rising of dawn chorus...

It researches how this space could be built through allowing ourselves to be still, in eye contact with whatever happens outside, and be honest, human, then dance and play from there.

It will explore the relationship between the dance and music within the score for improvisation, and how these can sing together.

So far Jon Ranger and Hayley Matthews have an agreement to make this and are looking for the support to make it happen. *Still in the City* has toured in research and with one musician, and researched how it can really include its audience, this new development for the project will bring a deep relationship with the dance and the music, expand the musical element and take the work out into the outdoor spaces of cities, in this new beginning.

Creative team

Artistic Director and performer: Hayley Matthews

Musical Director: Jon Ranger



Hikapee

Edd Casey
Co-Artistic Director
5 The Island,
Thames Ditton, KT7 0SH, UK
M: +44 (0)787 428 8959
E: hikapeetheatre@gmail.com
W: www.hikapeetheatre.com

Hikapee combines circus and theatre to create accessible story telling performances for family audiences. The company was co-founded by Bryony Livesey and Edd Casey and *HOME* is the company's first outdoor performance. *HOME* explores exactly what the name suggests, and uses highly skilled circus, physical character work, and an interactive installation to do so.

HOME

HOME is a new outdoor circus performance that explores ideas of home, homelessness, and our intrinsic desire to find a place we can call our own. This family orientated show weaves together slapstick comedy with breath-taking aerial and acrobatics and culminates in the creation of a 'house' - an open structure and installation for the audience to explore.

The structure is a scaffolding house 4.5m high and with a 4m x 4m footprint.

The performance, with 4 performers, is currently 25 minutes long but the company is looking to lengthen it slightly before next year and the installation which happens straight after the show can be adapted to suit wherever it is set, but on average runs between 15-45 minutes.

HOME was originally commissioned by The Lyric, GDIF, Watford Palace and Latitude and has been supported by the Arts Council and by Theatre Delicatessen throughout the creation period.

HOME is co-directed by Bryony Livesey and Edd Casey and designed by Saz Moir, previous credits including NoFit State's Bianco and Lighting and Sound by Sarah Readman, previous credits including Punchdrunk and Shunt.

As part of the installation, documentary type videos are shown on screens inside the house. These were filmed and edited by Ed Swabey from Jonny Favourite and were created in conjunction with volunteers from the St Mungo's Outside in programme. Alongside this, the audience (especially children) are invited to write their thoughts on 'what makes a home' on the walls of the house.



Jordi L. Vidal Company

Jordi L. Vidal
Artistic Director
PL. L. Morichar, 52
1060 Brussels, Belgium
M: +32 (0)478 329 978
E: jordiLvidal@yahoo.fr
W: www.jordilvidal.net

Jordi L. Vidal Company propose performances that combine:

- the theatre and its journey in the time
- the circus and its journey in the instant
- the dance in its journey in the dream

La Rencontre (The Encounter) is an original show that combines acrobatics, dance, and physical theatre. The topic of this project is the meetings diversity in everyday life.

La Rencontre

La Rencontre is composed of interconnected tableaux / scenes. The show has a travelling and / or fixed form depending on the space where they play. This project could be played in the key places of life and sharing of the city (squares, bus stop, streets, parks). They are going to resonate and move the environment around themselves in a new way. Find surprising and unusual solutions to obstacles, barriers, and architectural constraints so they will become allied and playing partners.

The company's goals:

- Make a public space vibrate
- The creation of an "alive" performance in constant transformation

La Rencontre contains no text, can tour internationally, and appeals to all kinds of audiences. It's running time is flexible (5 – 50 minute versions are available); it can be played several times a day; and is suitable for indoor and outdoor spaces. The show has a very light technical rider.

Performers: Amerigo Delli Bove, Youri De Gussem, Julie Querre, Clara Henry

Concept, direction, choreography: Jordi L. Vidal

It is co-produced by "Tous en Piste Pour BXL" COCOF, Belgium and has the support of Espace Catastrophe, Brussels.

Creation residencies: Espace Catastrophe, La Roseraie, La Raffinerie / Charleroi - Danses, Cirqu'conflex, Maison Culturelle d'Ath.



Levantes Dance Theatre

Eleni Edipidi
Co-Artistic Director
Flat 1 Harrison Court,
61A Rye Hill Park,
London, SE15 3JN, UK
M: +44 (0)794 093 7991
E: info@levantesdancetheatre.org
W: levantesdancetheatre.org

Eleni and Bethanie established **Levantes Dance Theatre** in 2005 to create bold innovative work. The company has been funded mostly through commissions, upon which they have developed a national reputation and track record of delivering high-quality successful productions. As a result, they are Associate Artists at Greenwich Dance (London), who support their projects both in-kind and through commissions.

THE BAND

The idea is to make a 20-minute outdoor version of the new 70 minutes' indoor production *THE BAND*.

Progress to date:

April 20015: Residency at The Creative Centre, France for *THE BAND* indoor version

March 2016: Arts Council Funding for R&D for *THE BAND* indoor version

January 2017: Arts Council Funding for re - rehearsing and UK touring (tbc in August 2016) for *THE BAND* indoor version

September 2016: 1-week rehearsal for *THE BAND* outdoor version.

Art forms involved:

Dance theatre, aerial dance, humour and strong visual design.

Creative team:

Artistic Director & performer: Eleni Edipidi

Performer: Nathan Johnston

Visuals: Gopan Iyadurai

Sound: Rob Spaul

Dramaturgue: Lisa Marie Bowler

Scale of work:

Small to medium



Liberty Rocks Arts

Ruby Soho

Artistic Director

Holly Cottage, Harpley, Clifton-on-Teme,
Worcestershire, WR6 6HG, UK

M: +44 (0)779 646 2667

E: rubysohoproductions@gmail.com

W: www.libertyrocksproductions.co.uk

Liberty Rock Arts create unique, mechanical, artistic experiences for those usually unable to access mainstream arts.

Currently touring are the *Wherever People*, interactive performance exploring folk tales of nationalities suffering in the refugee crisis at libraries and family events in the Midlands. *The Salmagundi* is first-person theatre for young people in libraries in the North.

Marie Celestial

The company created a static circus show in 2015, however, they found that this did not fulfil the full ambitions of the set. What they are developing instead is fully interactive, promenade performance, working with puppetry, incorporating human interplay. They have recently received an Arts Council GFA award to research and develop a fully processional show which will breathe life into the machine!

The premise is a sentient ship which walks on mechanical chicken legs, interacting with incidental audiences. The set is in the style of a mechanical spaceship incorporating the rigging for aerial circus.

The company will create a story arc which breaks down into interlinking but separate story capsules. These would be individual elements each lasting approx. 5 mins, which can be linked together in a range of patterns to build a series of shows. The aim is to develop 10 show capsules, some aerial, processional, technological, musical and some hybrid. The company will make the storyline non-linear, allowing them to swap capsules to create wildly differing variations of the same story arc. These will allow very different venues to book a complete show, built out of capsules that best suit the local environment. This also enables the client to select their own variation of the show and for the company to perform in a number of different event conditions.

They will work with a team of 8 people. The team will comprise some circus skills, walk-about, puppetry, sound and light for performance and mechanical knowledge.

The set measures 5m high so it is highly visible. The aim is to tour the promenade show in 2017. They will also have the capability to provide the set as a stage, DJ booth, interactive installation or sculpture depending on the scale and budget of individual events.



Simone Riccio

Sascha Goslin

Producer

29 Weatherby Road, Norwich,
Norfolk, NR5 9NH, UK

M: +44 (0)744 791 2773

E: info@simonericcio.com

W: www.simonericcio.com

Simone Riccio has been a contemporary circus performer since 1998 and more recently started directing his own of small scale shows. His solo shows have been performed throughout Europe, including the London International Mime Festival. He previously toured with NoFit State Circus, in *Tabu* and *Labyrinth* and recently played the first role at La Fura Dels Baus's show *Aphrodita y el Juicio de Paris*.

On Wheels

On Wheels is a small scale, solo, outdoor performance which can be performed up to 2/3 times per day. The show will use a Vespa with a specially built structure to allow it to carry a German wheel.

The show is performed in two parts. The first part of the show is a walkabout performance, as Simone slowly rides the Vespa through the festival or designated area, playing music, speaking to passers-by, encouraging them to follow him as he gathers the audience, once he has gathered a crowd he will then lead them to the designated performance spot. The second part sees Simone, still in character, building the German wheel and then capturing the audiences' imagination and wonder as he performs the German wheel routine.

On Wheels features audience interaction, character acting, juggling, German wheel and acrobatics.

The show will respond to its location and can be moved between multiple sites within a festival or city or to a neighbouring city within a day. Set Up and Take Down times are minimal.

The company will undertake residencies to develop the music and choreography between October and January/February, rehearsals will take place in February/March and touring will begin from April/May.

The show is directed by Simone Riccio. The company is in the process of applying for funding to develop the work. They are in discussions to work with Rhi Matthews on the costumes, PeteNotBombs on music, Tarn Aitkin to design the structure to hold the wheel and Assunta Anatrella on choreography.



The Feminist Mouse Circus

Miranda Jones

Artist

NB Surprise

Appletree Lane,

Cropredy, Banbury

Oxfordshire, OX17 1PZ, UK

M: +44 (0)796 196 2548

E: miranda@lamutanta.com

W: www.lamutanta.com

The Feminist Mouse Circus are Miranda Jones (La Mutanta) and Jenny Jackson. Miranda is an artist, performer and arts facilitator with many years' experience of street arts including an ongoing partnership with Rimski's piano, most recently a tour for Crying Out Loud.

Jenny is a scientist, teacher, and taxidermist with warped ideas and an eye for detail.

The Feminist Mouse Circus

The Feminist Mouse Circus is a small show based around a souped up pram featuring the dare devil skills of a group of radical feminist stuffed mice.

It is a playful send up of the sexist stereotypes of circus – the company has performed a work in progress version as a walkabout at Glastonbury Festival and as part of a story telling session at Boomtown Festival. They had enthusiastic reactions from family audiences.

The show uses puppets, story-telling, humour, performance, audience participation, visual art and a bit of music. The company relishes the chance to use the 'F' word as often as possible and try to open up the possibility for debate, especially with young people and families.

www.seachangearts.org.uk/out-there | www.xtrax.org.uk

XTRAX showcases are supported by:

