



Greenwich+Docklands International Festival
In association with XTRAX
presents

XTRAX



XTRAX / GDIF 2016 SHOWCASE

24-26 JUNE 2016, LONDON, UK

ARTISTS BOOK

XTRAX showcases are supported by:



ARTS COUNCIL
ENGLAND



UK Trade
& Investment

Greenwich+Docklands International Festival is supported by:



ARTS COUNCIL
ENGLAND

ROYAL
GREENWICH
FESTIVALS



FOUNDATION FOR
FUTURELONDON
LONDON 2016



Front cover photo credits:

Ear Trumpet by Gobbledegook Theatre © Dominic Old
BLOCK by NoFit State Circus & Motionhouse © Dan Tucker
Peregrinus by Teatr KTO © Iija van de Pavert

CONTENTS

WELCOME.....	04
XTRAX.....	05
STAFF	06
ROYAL BOROUGH OF GREENWICH ARTS COUNCIL ENGLAND	07
OLD ROYAL NAVAL COLLEGE	08
TOWER HAMLETS COUNCIL	09
FOUNDATION FOR FUTURELONDON	10
GREENWICH DANCE	11
ROYAL MUSEUMS GREENWICH	12
WITHOUT WALLS	13
DELEGATE SERVICES AND EVENTS	14
SHOWCASE SCHEDULE AND PROGRAMME OVERVIEW	15
ARTIST INDEX	18
ARTIST PAGES	20
NOTES.....	53
ABOUT XTRAX	54

WELCOME TO GREENWICH+DOCKLANDS INTERNATIONAL FESTIVAL'S ANNUAL SHOWCASE, PRESENTED IN ASSOCIATION WITH XTRAX

This is a very special year for GDIF, as it marks our 21st birthday: quite a landmark for a free outdoor arts festival and we're celebrating with our biggest ever showcase, featuring an exhilarating range of new work from UK and international companies. Performances will be taking place across an extended range of sites, so that in addition to the Old Royal Naval College and Cutty Sark Gardens, there will also be productions taking place in St Alfege Park, on traffic free streets in Greenwich Town Centre and at the Queen Elizabeth Olympic Park.

This year's showcase has received additional support from the Arts Council England through a new project managed by XTRAX called Platform 4:UK, which not only means that we can present an expanded programme of UK productions, but also welcome a number of visiting international delegates with whom we can share some of the diverse range of new outdoor work that we've brought together for this year.

As a member of the Without Walls consortium, I'm delighted that we'll be presenting eight brand new shows this weekend, including new GDIF commissions from Far from the Norm and Les Enfants Terribles. Other GDIF commissions have been created in partnership with Latitude, Lyric Hammersmith and Watford Palace Theatre and bring fresh new voices from two new and exciting companies - How it Ended and Hikapee.

GDIF's international ambition has always been at the heart of the showcase weekend. This year we feature artists from Belgium, Germany, Italy, Netherlands, Poland, Spain, Togo and Australia but cross border working has also been enhanced by the presence of a Circostrada meeting in the lead up to GDIF and we're also very grateful to the European Commission for recognising GDIF's importance to the European outdoor arts sector, by co-hosting our opening night reception.

As always, we're extremely grateful to our partner organisation, XTRAX, for all the tremendous work that they've put into this year's showcase, and also to you, our visiting delegates, who will be attending and making this 21st birthday edition so special. I hope that you have a really enjoyable and rewarding experience here at GDIF and look forward to meeting you over the course of the weekend.

Bradley Hemmings MBE
Artistic Director

WELCOME FROM XTRAX

The team of XTRAX is delighted to welcome you to the 2016 XTRAX / GDIF showcase.

This is the sixth time we have worked with Greenwich + Docklands International Festival (GDIF) to create a programme of activities that will assist professionals from the outdoor arts sector to share information, discover new projects in development and make new contacts - as well as enjoying the festival. In addition to the 34 shows presented as part of GDIF we hope you will enjoy meeting the further 65 artists who are presenting their work at the Marketplace on Friday, and as part of our XTRAX Shorts programme on Saturday and Sunday morning. This year we are pleased to invite you to join the artists and our team at the Festival Club on Saturday night at The Albany for more convivial networking and exclusive performances.

We are especially pleased this year to have additional support from Arts Council England through their International Showcase funds towards the Platform 4: UK programme, enabling us to increase the number of international delegates we have in attendance, as well as to spotlight even more great work from UK artists.

As an organisation, we value our relationships with international colleagues; we are very proud to be hosting a meeting of the Circostrada network of European Street Arts and Circus professionals ahead of the showcase events, and we are pleased to be welcoming guests from even further afield including from Asia, Africa and Australia.

We are an outward looking organisation, working with artists, creative professionals and organisations whose work and ideas know no borders. The artists and professionals of the outdoor arts and festivals sector are always resourceful, inventive and forward thinking and whatever the outcome of the historic referendum on June 23rd, our work will continue in the spirit of international co-operation.

We are grateful to Arts Council England for its ongoing support of all our activity, and to UK Trade and Investment for support of our international guests. We look forward to meeting you during the showcase.

Maggie Clarke,
Director, XTRAX on behalf of all the XTRAX team



STAFF

Thank you to all staff, partners, artists and volunteers who have contributed to the XTRAX / GDIF 2016 Showcase.

Greenwich+Docklands International Festival Team

Bradley Hemmings - Artistic Director

Matthew Jones - General Manager

Jacqui Gavin – Festivals Manager

Ellie Dragonetti – Marketing Officer

Rosanna Lowton – Projects Administrator

Daniel McDermott-Roe - Volunteer Coordinator

Sharon Kean, Kean|Lanyon - Press representative

Iain Lanyon, Kean|Lanyon - Print design

XTRAX Team

Anna Bechtloff – Administrator

Matthew James Belfield – Communications and Event Co-ordinator

Anaïs Biaux – Project Manager and Producer

Chris Bryerley – General Manager

Glenn Casely – Finance and Operations Manager

Maggie Clarke – Director

Isaac Cunningham - Administrative and Marketing Assistant

Alonso Lobato – Project Manager

Alex Winkcup – Project Manager: Evaluation and Audience Development

XTRAX gratefully acknowledges the support of Arts Council England.

WELCOME FROM THE ROYAL BOROUGH OF GREENWICH

I am delighted to join you in celebrating another season of spectacular performances from one of the borough's most successful arts organisations – Greenwich+Docklands International Festival. Royal Greenwich has a strong history of supporting arts and culture, and particularly of animating our town centres with spectacular street performances designed to appeal to visitors from all over the world.

Arts and culture are vital to the economy and vibrancy of this borough; the sector supports nearly 14,000 jobs locally and provides a huge boost for tourism.

Free events such as GDIF have always been treasured by the borough for the festival and community spirit that they bring.

GDIF is part of the annual Royal Greenwich Festivals which promises something for everyone and has firmly established the borough as the place to experience world-class entertainment. It showcases the very best in dance, music, art and theatre and, this year, we are incorporating film and literature to widen the appeal of the festivals event even further.

I'd particularly like to thank all those artists and arts organisations who are working hard to make Royal Greenwich a creative and exciting place to live, work and visit, and I look forward to getting out and about to see all the amazing performances over summer.

Councillor Denise Hyland, Leader, Royal Borough of Greenwich



WELCOME FROM ARTS COUNCIL ENGLAND

Welcome to what is a very special year for Greenwich+Docklands International Festival. The Festival really has come of age as one of the country's leading outdoor arts platforms. Each year it attracts leading artists from around the world to London, creating an exciting and compelling arts programme that both delights and inspires its diverse audience.

Festivals represent a really important part of the arts and cultural ecology in England. At their heart is an outstanding ability to bring communities together, to attract cultural tourists and to showcase outstanding work in an inclusive environment. In addition to delivering great art and culture, festivals also drive economic development, making a significant contribution to the success of their local area through increased footfall.

GDIF has thrilled and entertained audiences for the last 21 years and 2016 is no different. From theatre and circus through to dance, music and new writing – this year's programme is once again bursting with an eclectic mix of work for everyone to enjoy.

Joyce Wilson, London Area Director, Arts Council England



WELCOME FROM THE OLD ROYAL NAVAL COLLEGE (ORNC)

Welcome to Sir Christopher Wren's riverside masterpiece and one of London's most famous landmarks. Over 500 years ago, Henry VIII's favourite royal palace stood on this site and it is here that his daughter Elizabeth I was born and spent the early years of her reign.

In the late 17th century, the Palace was in disrepair and Wren and Nicholas Hawksmoor, by Royal command, developed the site as the Royal Hospital for Seamen - for the benefit of old and injured sailors. In 1806, the body of Admiral Nelson lay in state in the Painted Hall. In 1873, the Hospital was transformed into the Royal Naval College, as a training facility for the Navy. Today, it's one of the UK's leading visitor attractions and host to a vibrant programme of cultural events throughout the year. In September, we will begin conservation of over 3,700sqm of wall art in the Painted Hall. Visitors will have a once in a life time opportunity to get up close to the painting and see the conservation work in detail on special scaffolding tours.

I very much hope that you will enjoy the Greenwich Fair events at the Old Royal Naval College and find time to take in the Painted Hall, the Chapel and our visitor centre and shop - you will be surprised and amazed at what you find!

And do come back again!

Brendan McCarthy, Chief Executive, Old Royal Naval College

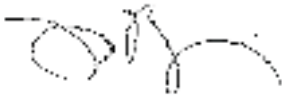


WELCOME FROM TOWER HAMLETS COUNCIL

We are delighted to continue our long and fruitful partnership with GDIF, and we look forward to hosting the world premiere of *Silence*, presented by Polish company Teatr Biuro Podróży, famed for its legendary street theatre production - *Carmen Funebre*, which explores the impact of war on civilians.

This newly commissioned sequel includes physical theatre, fire, unusual staging, puppetry and music and will pick up the continuing story of refugees and migrants caught up in a spiral of war, fences and the dream of escape. The show is commissioned by GDIF, Hull UK City of Culture 2017 and Freedom Festival and following on from the success of last year, the show will be presented in Bethnal Green Gardens on Thursday 30th June and Friday 1st July 2016.

Also in Tower Hamlets this year, the most ambitious Dancing City programme of high-quality outdoor dance to date. Exhilarating, thought-provoking and fun, this annual outdoor dance extravaganza is back with performances and bite-sized al fresco treats from UK and international dance companies. Journey across the parks, piazzas, open spaces and waterfronts of Canary Wharf and encounter everything from dance in a three dimensional head structure, a performance choreographed around a telephone box or reinvention of a football match.



John Biggs, Mayor of Tower Hamlets



WELCOME FROM FOUNDATION FOR FUTURELONDON

Welcome to Queen Elizabeth Olympic Park, where for the third year we will be welcoming Greenwich+Docklands International Festival to our part of east London.

Established in 2015, the Foundation for FutureLondon is an independent charity building on the cultural legacy of the London 2012 Games. Working with the wealth of cultural and creative industries here in east London, and our new partners the V&A, Sadlers Wells, UAL's London College of Fashion and UCL, we've started the journey to create a world-leading cultural district for the direct benefit of everyone who lives here.

Our arts and culture programme will bring the vision for this thriving district to life locally, nationally, and internationally. Over the next five years, a dynamic programme of projects, events and initiatives in and around Queen Elizabeth Olympic Park will celebrate east London's vibrant artistic landscape while introducing our new partners to the area and exploring what the future could hold. Centred around the core values of participation, collaboration and innovation, we hope to collectively test new ways of living in the 21st century.

GDIF's site-specific commission *The People Build* from French artist Olivier Grossetête perfectly captures these values: inspired by the complex history of the Park, local surroundings and future plans, Grossetête will design a new London landmark and build it in just one day with the help of hundreds of Park visitors. There are no cranes or machinery involved, just cardboard boxes, packing tape and collaborative human endeavour to see this inspiring structure rise from the ground up, and then fall away again. The public will be invited to participate in workshops leading up to the big build, giving wider audiences the opportunity to experiment with structural designs and explore what it means to build in an ever evolving city.

We look forward to welcoming you to the Park and sharing our vision for east London with you.

Adriana Marques
Head of Arts and Culture
Foundation for FutureLondon

WELCOME FROM GREENWICH DANCE

We look forward to welcoming you to Greenwich Dance's home, The Borough Hall, during your time at Greenwich+Docklands International Festival (GDIF).

This building is a fun palace, the springboard for much of Greenwich Dance's work locally and internationally. GDIF's offices are based within the Borough Hall, alongside a number of creative companies and organisations, and so this special festival is part of our lives throughout the year. We are both part of a rich cultural scene in south east London, supported by the Royal Borough of Greenwich.

Greenwich Dance's vision is to create the space for dance to transform lives, and increasingly those spaces are found outside of traditional theatres and studios. Due to the flexibility of our residency spaces, much of the work in development is destined for site-sensitive and outdoor contexts.

We're delighted to host the Marketplace once again this year. Whilst you're here, do come and find out more about Greenwich Dance's work: supporting artists to create and perform; providing platforms for local communities to be creative; inspiring the next generation of young dancers, and producing a wide range of distinctive events and performances for audiences to enjoy.

We hope to meet you during the festival. Enjoy!

Kat Bridge and Amanda Davey,
Artistic Director/Executive Director, Greenwich Dance



WELCOME FROM ROYAL MUSEUMS GREENWICH

At the heart of Maritime Greenwich are the five world-class attractions of Royal Museums Greenwich – the Royal Observatory, the Peter Harrison Planetarium, Cutty Sark, the National Maritime Museum and the Queen’s House. Each year we welcome over 2.5 million visitors to our historic sites, making them one of the top ten visitor attractions in the UK. Together they – and we – are dedicated to illustrating for all the importance of the sea, ships, time and the stars, and their relationship with people.

We are honoured to have co-commissioned GDIF 2016’s spectacular free launch event, ‘The House’. Taking place on the lawns of the Queen’s House and combining music, performances and pyrotechnics with dazzling digital projections onto its façade, this event celebrates 2016 as the House’s 400th anniversary. Regarded as England’s first classical building, it was designed in 1616 by Inigo Jones for James I’s queen, Anne of Denmark, and completed around 1638 for Queen Henrietta Maria, wife of Charles I. It is the last surviving building of the former Palace of Greenwich, birthplace of Henry VIII and Elizabeth I, and was completed as a garden ‘house of delight’ for the queen.

Art and design were fundamental to the Queen’s House when it was a royal residence: within its pioneering architecture, works by old masters originally hung alongside contemporary commissions. When the House reopens later in 2016, this tradition will continue by showing our extraordinary art collection, one of the finest in the country, including paintings by famous names like Hogarth, Reynolds, Gainsborough, and the van de Veldes, alongside more contemporary artworks. A highlight of these will be a new gold-leaf ceiling installation by Turner Prize-winner Richard Wright, inspired by motifs from the House’s iconic Tulip Stairs.

I do hope the GDIF launch event will entice you to return to the Queen’s House when it reopens in its new splendour. Do make a day of it and experience our other attractions too!

Dr Kevin Fewster
Director, Royal Museums Greenwich



WITHOUT WALLS - EXCELLENCE IN OUTDOOR ARTS

Without Walls is a consortium of festivals who work together to commission and present ambitious new outdoor shows by UK artists, taking them to audiences in their thousands across the country. Since 2007 we have transformed the landscape for outdoor arts in the UK, developing over 100 new shows, many now touring internationally.

In 2016, the Without Walls commissions are;

Bed by Entelechy Arts; *BLOCK* by NoFit State Circus and Motionhouse; *Campervan of Love* by New Art Club; **The Fantastical Flying Exploratory Laboratory* by Les Enfants Terribles; **H.O.H.* by Far from the Norm; **Lance Moi En L'air* by Joli Vyann; *Le Cheval Solitaire* by AboutNOWish; *Masquerade* by Yello Brick; **Miss High Leg Kick's Audition Project* by Francesca Baglione/Miss High Leg Kick; *Phone Box* by Corey Baker Dance; **Project_Vee* by Circus Geeks X Pangottic; *You And I Know* by Candoco Dance Company; *Urban Astronaut* by Highly Sprung.

** shows appearing during the XTRAX / GDIF showcase weekend*

The consortium members are:

Brighton Festival; Greenwich+Docklands International Festival; Norfolk and Norwich Festival; Ageas Salisbury International Arts Festival; Stockton International Riverside Festival; Hat Fair, Winchester; Out There International Festival of Circus and Street Arts; Showzam!; Just So Festival; 101 Outdoor Arts Creation Space.

The Without Walls Associate Touring Network (ATN) works with a network of ten festivals to extend the reach and benefits of our programme in areas where there is low engagement with the arts, giving diverse audiences across England access to the highest quality new work and further strengthening the outdoor touring sector.

In 2016, the ATN members are; Appetite, Stoke-on-Trent; Derby Festé; Freedom Festival, Hull; SO Festival, Skegness; Lancashire Encounter, Preston; Right Up Your Street, Doncaster; Leicester City Council; Yorkshire Festival; Bell Square, Hounslow; Vivacity, Peterborough.

We are always looking to develop partnerships with organisations that would like to support the creation of new work. If you would like to find out more about how to work with Without Walls, please talk to Maggie Clarke or Anaïs Biaux during the showcase weekend or visit:

www.withoutwalls.uk.com

Without Walls is managed by XTRAX.

Without Walls gratefully acknowledges the investment and support of Arts Council England through Grants for the Arts.



DELEGATE SERVICES AND EVENTS

FESTIVAL CENTRAL MARQUEE

The Festival Central marquee is the central meeting and information point for all XTRAX / GDIF 2016 delegates and is situated on Pepys Lawn at the Old Royal Naval College. XTRAX staff will be available throughout the weekend to offer advice on the programme and to help ensure your visit is enjoyable, informative and productive.

OPENING TIMES

The Festival Central marquee will be open at the following times:

Friday 24 June 17:00 – 21:30

Saturday 25 June 10:00 – 21:00

Sunday 26 June 10:30 – 16:00

NOTES ON THE SCHEDULE

Please note that most performances are repeated several times over the weekend so it should be possible to see all the shows. Any revisions to the schedule will be posted in the Festival Central marquee and on XTRAX's Twitter page, @xtraxarts.

DELEGATE INFORMATION

PHOTO BOARD

We will use the photographs you have sent us when registering, and place them on a noticeboard to help you identify who's who during the showcase.

ARTIST INFORMATION AREA

Artists and delegates are invited to bring promotional material about their work to the Festival Central marquee. There will be space to leave brochures and flyers.

ACCESS SERVICES

We aim to make the XTRAX / GDIF 2016 showcase an inclusive event within an accessible environment and will do all we can do to support your requirements. If you have any access requirements please contact the information desk in the marquee.

There will be BSL interpreters at the Marketplace (speeches only); the Welcome Drinks, and at the artists' presentations on Saturday and Sunday morning.

JOIN IN THE CONVERSATION ON TWITTER

Let everyone know where you are, what you have seen, and who you have met by sharing your time at the XTRAX / GDIF 2016 showcase with your followers on Twitter.

We'll be tweeting throughout the weekend using the following hashtags:

#GDIF2016

#XTRAXshowcase

SHOWCASE SCHEDULE AND PROGRAMME OVERVIEW

FRIDAY 24 JUNE

XTRAX / GDIF International Marketplace

The Borough Hall, Greenwich Dance, London

- 12:30 – 16:00 **XTRAX / GDIF International Marketplace**
XTRAX has invited creative outdoor arts organisations from across the UK and beyond to participate in a dynamic celebration of outdoor work at our International Marketplace.
- 12:30 – 13:30 **Lunch and Networking**
- 13:30 – 16:00 **International Marketplace: Core Opening Times**
The Marketplace gives participants and attendees the opportunity to make contact with over 50 creative outdoor arts professionals in a short amount of time. The work of those present represents the variety, and the best possible breadth and diversity of outdoor work currently available across the UK and beyond.
- 16:30 – 18:30 **Panel Discussion: The UK EU referendum: What does it mean for the street arts sector?**
Practitioners from across Europe and beyond will come together to reflect on the outcome of the UK's EU referendum, and explore the impact of this on the street arts sector.
The discussion will be chaired by Josephine Burns, Chair of Without Walls and Independent Consultant, with contributions from Angus MacKechnie (Executive Director, Independent Street Arts Network), Geoffrey Brown (Euclid). Other speakers to be announced.
- 19:30 – 21:30 Opening Reception, Co-hosted by The European Commission Representation in the UK, XTRAX and GDIF
- 22:00 - 22:40 Festival Programme – *The House* presented in association with Royal Museums Greenwich
National Maritime Museum

SHOWCASE SCHEDULE AND PROGRAMME OVERVIEW

SATURDAY 25 JUNE

FESTIVAL CENTRAL MARQUEE

- 10:00 – 10:30 Coffee and Networking
- 10:00 – 12:00 **XTRAX Shorts: chaired by Bettina Linstrum, Director of ArtsAgenda**
XTRAX Shorts is a great opportunity to hear about exciting new work available for touring in the upcoming season. It is also a vibrant forum to meet artists, producers, promoters and to network with others in the sector.
Acrojou - Vessel (UK)
Mr Wilson's Second Liners & Walk the Plank - Voodoo Rising (UK)
Frolicked - Seeing Red (UK)
Impossible - Heads (UK)
Rogue Play - Snakes and Ladders (UK)
Fanzini Productions - Circus Jukebox (IE)
Cia Maleta - Boa Noite (IE)
Gandini Juggling - Sigma (UK)
Trigger Stuff, Mervyn Millar, Carl Robertshaw & Black Skull Creative - Flying Dragon (UK)
- 11:00 - 19:00 *The People Build*, devised by Olivier Grossetête
Part of a season of Arts and Culture hosted by Foundation for FutureLondon and the London Festival of Architecture 2016 – **Queen Elizabeth Olympic Park**
- 12:00 - 13:00 **Meet the delegates**
All delegates are warmly invited to briefly introduce themselves and enjoy some informal networking time before the festival programme starts.
- 13:00 – 21:30 **GDIF Festival Programme – Various Locations**
- 21:30 - Late **The Festival Club at The Albany, Douglas Way, Deptford**
Join us at the Festival Club, an exclusive meeting place where delegates and artists can meet and relax over a drink after the Greenwich Fair programme has ended.
- 22:30 - 23:00 **Chorus by Ray Lee, The Albany, Douglas Way, Deptford**
A delegate-only presentation of *Chorus*, by Ray Lee, a monumental installation of kinetic sound sculptures, performed in The Albany's beautiful garden space.

SHOWCASE SCHEDULE AND PROGRAMME OVERVIEW

SUNDAY 26 JUNE

FESTIVAL CENTRAL MARQUEE

10:00 – 10:30	Coffee and Networking
10:30 – 12:00	XTRAX Shorts: chaired by Bettina Linstrum, Director of ArtsAgenda Décadas de Sonho, Companhia Persona, Imaginarius Festival - <i>Vertico</i> (PT) Akademi - <i>Paradiso</i> (UK) Tumble Circus - <i>Unsuitable</i> (IE) Theater Titanick - <i>Alice on the Run</i> (DE) Moxie Brawl - <i>El Vestido</i> (UK) Flora Herberich - <i>Light up</i> (UK) Silvia Mercuriali, Maddie McGowan, Talia Randall & Pablo Meneu - <i>Honolulu</i> (UK)
12:00 – 19:00	GDIF Festival Programme – Various Locations
16:00	Festival Central Marquee closes
17:00 - 19:00	<i>The People Build</i> - finale

ARTIST INDEX

A

AFUMA - <i>THE TOGOLESE STILT-MEN</i>	20
ASHLEY PEEVOR - <i>GRASS MEN</i>	21

B

BICYCLE BALLET COMPANY - <i>STRICTLY CYCLING</i>	22
BEAUTIFULMESS - <i>THE LONELINESS STREET CABARET</i>	23

C

CHRISTOPHER GREEN - <i>IDA BARR'S 21ST CELEBRATION BLOC PARTY</i>	24
CIRCUS GEEKS X PANGOTTIC - <i>PROJECT_VEE</i>	25
CIRCUS KATOEN - <i>EX AEQUO</i>	26
CLIMATE GUARDIANS - <i>SHOES FOR HOPE & WING MAKING WORKSHOP</i>	27

D

D'IRQUE & FIEN - <i>SOL BEMOL</i>	28
DEAF MEN DANCING - <i>TEN</i>	29
DEAF RAVE	30
DESPERATE MEN - <i>SLAPSTICK & SLAUGHTER</i>	31

F

FAR FROM THE NORM - <i>H.O.H.</i>	32
FAUSTO BARILE - <i>GRAN TEATRO DENTO</i>	33

G

GOBBLEDEGOOK THEATRE - <i>EAR TRUMPET</i>	34
GREENWICH+DOCKLANDS INTERNATIONAL FESTIVAL - <i>THE HOUSE</i>	35

H

HIGHLY SPRUNG PERFORMANCE - <i>URBAN ASTRONAUT</i>	36
HIKAPEE - <i>HOME</i>	37
HOW IT ENDED - <i>THE LITTLE GARDENER</i>	38

J

JOLI VYANN - <i>LANCE MOI EN L'AIR</i>	39
--	----

L

LES ENFANTS TERRIBLES - <i>THE FANTASTICAL FLYING EXPLORATORY LABORATORY</i>	40
--	----

ARTIST INDEX

M

MIMBRE - *IF I COULD I WOULD* 41

MISS HIGH LEG KICK - *MISS HIGH LEG KICK'S AUDITION PROJECT* 42

N

NEW ART CLUB - *CAMPERVAN OF LOVE* 43

NOFIT STATE CIRCUS & MOTIONHOUSE - *BLOCK* 44

O

OLIVIER GROSSETÊTE - *THE PEOPLE BUILD* 45

P

PUPPETS WITH GUTS! - *CITIZEN SQUID* 46

R

RAY LEE - *CHORUS* 47

S

SWING ZAZOU 48

T

TEATR KTO - *PEREGRINUS* 49

TOMBS CREATIUS - *THE STRANGE TRAVEL OF MR. TONET* 50

U

ULIK PRODUCTION - *ULIK ROBOTIK DRUMSHOW* 51

W

WHALLEY RANGE ALL STARS - *YE GODS* 52



AFUMA

CIRCUS / OUTDOOR THEATRE / STILTS

NADÈGE THOLLY | EXECUTIVE PRODUCER

LES ATELIERS FRAPPAZ, CENTRE NATIONAL DES ARTS DE LA RUE,

16 RUE DU DOCTEUR FRAPPAZ, 69100 VILLEURBENNE

+33 (0)472 689 014

nadege.tholly@ateliers-frappaz.com / www.ateliers-frappaz.com



TG



Three artists from the high-plateaux region, the birthplace of the traditions of stilt-men who walk on stilts from their childhood. They belong to great stilt-men dynasties and have been trained by masters of the Ayena family. Togolese stilt is a speciality from the Atakpame region and the stilt-men, also known as “the tall men” or “woody legs” have to honour the tradition of their ancestral rites and celebrations.

THE TOGOLESE STILT-MEN

Afuma is a group of three Togolese warriors trained in the ancestral techniques and traditions but influenced by contemporary circus. Walking on stilts, 5m above the ground and accompanied by drums, *The Togolese Stilt-Men* have travelled the length of Africa with their stunning tricks. Afuma is an African fern that grows and sticks to trees without falling down, just like these men on stilts.

KEY PERSONNEL: Nadège Tholly (Executive Producer)

MIN. SPACE REQUIRED:

6 m x 6 m x 6 m

No. OF PEOPLE ON ROAD:

6

WRITTEN / SPOKEN TEXT:

No

CAN BE EASILY TRANSLATED INTO OTHER LANGUAGES:

N/A



ASHLEY PEEVOR

PERFORMANCE ART / INTERACTIVE INSTALLATION

ASHLEY PEEVOR | ARTIST & CREATOR
44 TRUBSHAW CLOSE, BRISTOL, BS7 0AD
+44 (0)778 966 0156
ashleypeevor@gmail.com
www.ashleypeevor.com



UK

Ashley Peevor is a multidisciplinary artist based in Bristol. His work draws inspiration from ancient mythology, cultural traditions religion and its irresolute existence in a modern day contemporary world of globalisation, technology and cultural appropriation.

GRASS MEN

Have we lost our connection with nature? Part-sculpture and part-performance, *Grass Men* is the living, breathing reincarnations of an older time.

With a touch of the absurd and a hint of mysticism, the *Grass Men* briefly restore an ancient relationship to the lingering green spaces in our urban environment.

KEY PERSONNEL: Ashley Peevor (Artist and Creator)

MIN. SPACE REQUIRED:	4 m x 4 m x 2 m
No. OF PEOPLE ON ROAD:	2 per costume
WRITTEN / SPOKEN TEXT:	No
CAN BE EASILY TRANSLATED INTO OTHER LANGUAGES:	N/A



BICYCLE BALLET COMPANY

DANCE / PHYSICAL THEATRE

KAREN POLEY | CREATIVE PRODUCER

+44 (0)790 997 6910

karen@bicycleballet.co.uk

www.bicycleballet.co.uk / www.kp-projects.co.uk



UK



The Bicycle Ballet Company creates exhilarating outdoor performances on bikes, exploring the joyful highs and gritty lows of cycling. The choreographies fuse dance and physical theatre with visual spectacle, comedy, and striking soundtracks. The work is created for the outdoors, to cross the boundaries of art, sport, health and environment, to attract the widest range of audiences or passers-by, and to transform familiar environments into places of discovery and magic.

STRICTLY CYCLING

Strictly Cycling is an improvisational, visual performance and 'cycle-about' choreography inspired by flash mobs, dadaism, every day cycling experiences and the great British weather. Five to ten performers in bright yellow cycle or wheel their bikes. They take over the streets creating epic human/bike sculptures; parking their bikes in the hands of passers-by and battling in slow-motion races, celebrating cycling, life and yellowness.

A night version of the show is also available.

Co-commissioned by The Coventry Mysteries Company, Prudential Ride London, Edinburgh Festival of Cycling and Bristol Cycle Festival.

Produced by KP Projects.

KEY PERSONNEL: Karen Poley (Artistic Director and Creative Producer); Janine Fletcher (Choreographer)

MIN. SPACE REQUIRED:

Variable

No. OF PEOPLE ON ROAD:

5 or 6 plus bikes

WRITTEN / SPOKEN TEXT:

Yes

CAN BE EASILY TRANSLATED INTO OTHER LANGUAGES:

Variable

BEAUTIFULMESS

CONTEMPORARY CLOWN /
PHYSICAL THEATRE / STREET CABARET

KATI FRANCIS | ARTISTIC DIRECTOR
32A MORRISH ROAD, LONDON, SW2 4EH
+44 (0)755 340 9085
beautifulmesstheatre@outlook.com
www.beautifulmesstheatre.com



UK



BeautifulMess inhabit unlikely spaces, re-imagine discarded things and listen to neglected voices: mixing bold design, dynamic physicality and multi-sensory images into silly and surreal shared and significant stories! Fusing live music, contemporary clown, puppetry and satire it creates striking, accessible performance. Rooted in public engagement, connecting communities locally and internationally, it creates a fresh lens through which to see our world.

THE LONELINESS STREET CABARET

We're in the midst of a Loneliness Epidemic and something must be done! Join an eccentric bag lady and struggling businessman as they search for an antidote... Fusing cabaret, physical comedy and puppetry, *The Loneliness Street Cabaret* is a jam-packed journey of fun from burlesque to the blues. Put your phone away, connect to the here and now - this performance will hug you tight without letting go!

Commissioned by Arts Council England, Big Lottery, LB Wandsworth, Royal Borough of Greenwich, Lambeth Adult Social Care Service

KEY PERSONNEL: Kati Francis (Artistic Director); Chloe Osborne & Gemma Williams (Creative Producers); Flick Fernando (Director)

MIN. SPACE REQUIRED:	7 m x 5 m x 4 m
No. OF PEOPLE ON ROAD:	3
WRITTEN / SPOKEN TEXT:	Yes, but not text reliant
CAN BE EASILY TRANSLATED INTO OTHER LANGUAGES:	Yes (Spanish/Catalan)



CHRISTOPHER GREEN

THEATRE / COMEDY / CABARET

CHRISTOPHER GREEN | CREATOR, WRITER & PERFORMER

66 SYLVAN AVENUE, N22 5HY, LONDON

+44 (0)771 283 3550

christopher_green@me.com

christophergreen.net



UK

Christopher Green is a multi-award winning performer and writer who has appeared all over the world, and works for the biggest cultural institutions in the UK. A versatile British actor, comedian, writer, cabaret performer, experiential artist, and character actor who has performed live on stage on three continents, bringing his characters to life with a sharp wit, political acuity, and oodles of personality.

IDA BARR'S 21ST CELEBRATION BLOC PARTY

Ida Barr is an old age pensioner who has embraced the music of today's "yut" with her own brand of rap which she has dubbed Artificial Hip Hop. If you're a lover of fresh and "funky phat rymes" and beats about prescription medication, multi-cultural Britain, with bags of heart, then Ida's your gal!

KEY PERSONNEL: Christopher Green (Creator, Writer, and Performer)

MIN. SPACE REQUIRED:	Room for DJ decks and one performer
No. OF PEOPLE ON ROAD:	2
WRITTEN / SPOKEN TEXT:	Yes
CAN BE EASILY TRANSLATED INTO OTHER LANGUAGES:	Yes



CIRCUS GEEKS X PANGOTTIC

CIRCUS

LAUREN HENDRY | PRODUCER
3 LEWIS GARDENS, LONDON, N16 5PF
+44 (0)772 332 4244
lauren@theproductionsshed.com
www.projectvee.com



UK



Project_Vee is a collaboration between PanGottic and Circus Geeks, two award winning circus companies. PanGottic's outdoor shows, *Thingamabob*, and *Pang On*, mix circus, physical theatre and homespun machines, and have toured across Europe. Circus Geeks started life as a blog in 2011, and since then has created circus shows using juggling, comedy and technology.

PROJECT_VEE

Juggling meets roulette wheel: danger, skill and unpredictable moments. *Project_Vee* is a nod to a Soviet era circus act, remixed for the 21st century. When steel, concrete and motors meet, *Project_Vee* takes juggling in a different dimension. Literally. *Project_Vee* is a 25 minute juggling duet based on a spinning structure, raising up to 3m high.

*Commissioned by Without Walls, Ageas Salisbury International Arts Festival and Out There, after an original investment by the City of London Festival.
Supported using public funding by Arts Council England, and support from the National Centre for Circus Arts, Working Theatres, and 101 Outdoor Arts.*

KEY PERSONNEL: Arron Sparks (Company Director, Circus Geeks); Matt Pang (Co-founder, PanGottic); Lauren Hendry (Producer)

MIN. SPACE REQUIRED:	10 m x 10 m x 6 m
No. OF PEOPLE ON ROAD:	2
WRITTEN / SPOKEN TEXT:	Yes
CAN BE EASILY TRANSLATED INTO OTHER LANGUAGES:	Yes



CIRCUS KATOEN

CIRCUS / ACROBATICS

TANJA RUITER | TOUR MANAGER (HH PRODUCTSIES)
KROMME LEIMUIDENSTRAAT 2 1059 EM AMSTERDAM
+31 (0)204 082 504
info@hhproducties.nl
www.hhproducties.nl



BE



NL



35'

At the age of six, Sophie van der Vuurst de Vries joined the Circus Rotjeknor in Rotterdam. As a child, Willem Balduyck had difficulties sitting still and always tried to defy gravity. As such, at the age of 10, his mother sent him to Woesh, a circus atelier in Brugge.

Willem and Sophie met each other years later at the circus school Codarts, College of Arts in Rotterdam. Their joint passion for nature, simple objects, and the search for their own 'tricks' released a lot of creativity which they use in Circus Katoen.

EX AEQUO

Ex Aequo is a wonderful performance of two young circus artists who surprise and move the audience with their impressive acrobatics. The two characters are going to live together, they both have important stuff, all of which deserves its own place in their house. In a playful and physical way, they explore the area where they are going to live, challenging each other and co-operating until they have found the right balance.

Supported by Fonds Podiumkunsten, Circo Circolo, Rotterdam Circusstad, Vlaams Circuscentrum, Vlaamse Overhead, Circusplaneet, Circus Rotjeknor, SKVR Rotterdam and Wennekerpand Schiedam.

KEY PERSONNEL: Klaus Jürgens (Director and Coach); Willem Balduyck and Sophie van der Vuurst de Vries (Performers)

MIN. SPACE REQUIRED:	8 m x 10 m x 4.5 m
No. OF PEOPLE ON ROAD:	3
WRITTEN / SPOKEN TEXT:	No
CAN BE EASILY TRANSLATED INTO OTHER LANGUAGES:	N/A



CLIMATE GUARDIANS

INSTALLATION

PIPPA BAILEY | SENIOR PRODUCER
5/245 CHALMERS STREET, REDFERN NSW 2016
+61 (0)293 190 066
pipppa@performinglines.org.au
www.climacts.org.au



AUS

Climate Guardians use angel iconography to highlight the vital role of guardianship of the precious natural world, and the protection of the young and future generations, in addressing the global threat from climate change. The company wants to spread an urgent message of hope and action to raise awareness, encourage more people to join this mission and protect our natural environment for future generations.

SHOES FOR HOPE & WING MAKING WORKSHOP

Shoes for Hope is a deliberate reference to the Paris action at COP21. Climate Guardians work in a public space to lay down shoes and encourage people to lend their shoes as an act of solidarity to the climate cause while they consider the urgency of Climate Action. They lovingly place and look after the shoes until they are required.

Climate Guardians' *Wing Making Workshop* is where art meets activism, as angels dressed in white with enormous wings highlight the vital role of guardianship of the precious natural world. Make a pair of wings and become part of an angelic flock protecting young and future generations.

KEY PERSONNEL: Pippa Bailey (Producer); Liz Conor and Deborah Hart (Convenors)

MIN. SPACE REQUIRED:	6 m x 10 m (negotiable)
No. OF PEOPLE ON ROAD:	4, requires 4 local participants
WRITTEN / SPOKEN TEXT:	Yes
CAN BE EASILY TRANSLATED INTO OTHER LANGUAGES:	Yes

DIRQUE&FIEN

MUSIC / STREET THEATRE

DIRK VAN BOXELAERE | PERFORMER
KERSBEEKSTRAAT 5, 2060 ANTWERPEN
+32 (0)477 232 649
dirk@dirque.com
www.dirque.com



BE

Company d'irque&fien is a long-standing duo, a dynamic double act on the asphalt, giving life to poetic street theatre, gently awakening our childlike souls. An accomplished fusion of music and multiple circus disciplines reinforces the trademark of the company. It gives their performances a universal dimension that allows the company to traverse borders and oceans.

SOL BEMOL

We all come from somewhere. With our luggage packed. Seeking a better future. A complicated balance. An indefinite harmony. Everyone brings their own language. Our language is the circus!

In *Sol Bémol*, two on-stage technicians drive the cadence of the performance by manipulating cranes, pulleys and the artists themselves.

Sol Bémol is undeniably dreamy, funny and for all audiences.

Created with the support of the Flemish Government, Le Boulon, Le cratere surface Ales - scène nationale and L'Archipel Perpignan- scène nationale.

KEY PERSONNEL: Dirk Van Boxelaere and Fien Van Herwegen (Creators); Fill de Block and Dimitri Ceulemans (On-stage Technicians)

MIN. SPACE REQUIRED:	9 m x 9.5 m x 6 m
No. OF PEOPLE ON ROAD:	7
WRITTEN / SPOKEN TEXT:	No
CAN BE EASILY TRANSLATED INTO OTHER LANGUAGES:	N/A



DEAF MEN DANCING

DANCE / MIME / PHYSICAL THEATRE

MARK SMITH | ARTISTIC DIRECTOR

6 ST ANN'S HOUSE, MARGERY STREET, LONDON, WC1X 0HS

+44 (0)779 613 6356

stevemannix71@hotmail.com

www.marksmithproduction.com/deafmendancing.html



UK

26'

Deaf Men Dancing is an all-male deaf dance company with a fusion of differing styles of dance with British Sign Language incorporated into choreography creating a unique, interesting and original aesthetic. DMD's performance credits include *Sense of Freedom (The Place)*, *Alive! (GDIF/Without Walls)*, *TEN (Mayor of London's Liberty Festival)* and *Hear! Hear! & Rosa (Sadler's Wells)*.

TEN

Deaf Men Dancing's Artistic Director/choreographer Mark Smith in collaboration with designer Ryan Dawson Laight, and composer Sean Chandler is proud to present *Ten*, inspired by double acts.

Two deaf men arrive with a table and stand on it. They set up their soapboxes and deliver to the audience their 'Ten Commandments for Deaf Awareness' in BSL, mime, physical theatre and dance.

Commissioned by GDIF

KEY PERSONNEL: Mark Smith (Artistic Director, Choreographer and Director); Denny Haywood (Dancer and Collaborator); Anthony Snowden (Dancer and Collaborator); Ryan Dawson Laight (Costume and Set Designer); Sean Chandler (Composer); Jonathan Samuels (Production Manager)

MIN. SPACE REQUIRED:

2 m x 2 m x 1 m

No. OF PEOPLE ON ROAD:

4-5

WRITTEN / SPOKEN TEXT:

Yes

CAN BE EASILY TRANSLATED INTO OTHER LANGUAGES:

Yes. The dancers translate the text into BSL



DEAF RAVE

PERFORMANCE / MUSIC

TROI "DJ CHINAMAN" LEE | FOUNDER & DJ
51 LAWFORD ROAD, HACKNEY, LONDON N1 5BJ
+44 (0)783 235 8191
deafrave@gmail.com
www.deafrave.com



UK

Deaf Rave has been established since from 2003, creating music for Deaf people of the UK and Europe. It has inspired many DJ's, Performers and Dancers from the community.

DEAF RAVE PERFORMANCE

Get ready to party as Troi 'DJ Chinaman' Lee brings Deaf Rave to Greenwich. You'll be moving to a beat you can feel as Deaf Rave performers turn up the volume and get the bass thumping. Join GDIF's 21st birthday celebrations with a street party to remember and, if you know the songs, join in and sign or sing along

KEY PERSONNEL: Troi "DJ Chinaman" Lee, Founder & DJ



DESPERATE MEN

STREET THEATRE

RICHARD HEADON | CO-ARTISTIC DIRECTOR

EPSTEIN BUILDINGS, MIVART STREET, EASTON, BRISTOL, BS6 5JL

+44 (0)117 939 3902

richard@desperatemen.com

www.desperatemen.com



35'

UK

One of the UK's most versatile and inventive outdoor arts companies, Desperate Men's mischievous, warm hearted work invites audiences to ask serious questions about the world. Desperate Men have been inviting people to play for over 30 years, creating, performing and producing ground-breaking outdoor theatre in the UK and internationally.

SLAPSTICK & SLAUGHTER

Two men recklessly attempt to confront the absurdity of war in just 35 minutes, using their bodies, their voices and the surrealist toolbox of dadaism. Playful, physical and blackly comedic, this new street theatre show, designed to work indoors and outdoors, examines how the barbaric chaos of World War One manifested itself in the nihilistic, nonsensical art that grew from it.

Funded by Arts Council England.

KEY PERSONNEL: Angus Barr (Director); Helen Parlor (Choreographer); Richard Headon and Jon Beedell (Co-Artistic Directors and Performers)

MIN. SPACE REQUIRED:	4 m x 5 m
No. OF PEOPLE ON ROAD:	2
WRITTEN / SPOKEN TEXT:	Yes
CAN BE EASILY TRANSLATED INTO OTHER LANGUAGES:	Yes



FAR FROM THE NORM

DANCE

LEE GRIFFITHS | PRODUCER & COMPANY MANAGER
4 CLYDE HOUSE, 93 SURBITON ROAD, KINGSTON KT1 2HW
+44 (0)794 978 3174
farfromthenorm@hotmail.co.uk
www.farfromthenorm.com



UK



25'

Far From The Norm is an experimental dance theatre company with strong foundations in hip hop theatre. Since founding Far From The Norm in 2010, Artistic Director Botis Seva has seen his company's work performed nationally and internationally, at festivals such as AfroVibeZ, Breakin' Convention, San Francisco's International Hip Hop Festival, and Austria's Hip Hop Goes Theatre.

H.O.H.

H.O.H. is an interactive, immersive dance piece that is centred on the nation's favourite sport, football, tackling socio-political issues that affect our everyday life. The show explores the connection of multi-cultural British people and football, creating a frenzied public disorder as these characters' voices and stories are exposed.

*Commissioned by Without Walls, Greenwich+Docklands International Festival, and Norfolk & Norwich Festival.
Co-produced by East London Dance.*

KEY PERSONNEL: Botis Seva (Artistic Director)

MIN. SPACE REQUIRED:	8 m x 8 m x 4 m
No. OF PEOPLE ON ROAD:	7
WRITTEN / SPOKEN TEXT:	No
CAN BE EASILY TRANSLATED INTO OTHER LANGUAGES:	N/A



FAUSTO BARILE

CLOWNING / WALKABOUT

ROBERTO DI LERNIA | DEVISOR & PERFORMER

VIA CAMUGLIANO,10, 56038, PONSACCO

+39 (0)347 290 0608

rufinoclown@libero.it

www.rufinoclown.com



IT

Roberto di Lernia, from Milan, is a clown, comedian, and actor who became Rufino in 1992. He studied acting and clown with Raul Manso, Jean Paul Denizon, i Fratelli Colombaioni, Mark Eriksson, Jango Edwards and others. During the past 20 years, Rufino has performed in many Italian and international festivals with his wide variety of characters and shows.

GRAN TEATRO DENTRO

Fausto Barile is a fantastic character that hides something special inside. Don't be afraid, he's always willing to show you his magical inner world. If Pirandello said that we all wear a mask every day to act in life's comedy, then Fausto can assure that, as well as the thousands of characters we have inside us, there is also a whole theatre!

KEY PERSONNEL: Roberto di Lernia (Devisor and Performer); Salvatore Frasca (Devisor); Marco Salvadori (Scenographer)

MIN. SPACE REQUIRED:

2 m; walkabout

No. OF PEOPLE ON ROAD:

1

WRITTEN / SPOKEN TEXT:

No

CAN BE EASILY TRANSLATED INTO OTHER LANGUAGES:

N/A



GOBBLEDEGOOK THEATRE

INTERACTIVE INSTALLATION /
THEATRE / AUDIO

LORNA REES | ARTISTIC DIRECTOR
37 ELIZABETH AVENUE, CHRISTCHURCH, DORSET, BH23 2DN
+44 (0)781 575 6946
lornarees@gmail.com
www.gobbledegooktheatre.com



UK



Gobbledegook Theatre's guiding principal is to create or facilitate the creation of work which hopes to 'render the familiar strange' for audiences – be it on a sea front promenade, in public gardens, music festivals, libraries or playgrounds. Gobbledegook's work is often made for families and young people, and it produces theatrical happenings through live performance, music, and installation.

EAR TRUMPET

Ear Trumpet is a piece about listening. It's about the sound under the ground. A team of sonic investigators has managed to track an exceptional auditory occurrence, which they have discovered runs under much of Britain. It is a playful installation, made for people of all ages inviting audiences to delight in the discovery of the secret music under your feet.

*Commissioned by Without Walls, Ageas Salisbury International Arts Festival, and Hat Fair.
Originally commissioned by Activate for the Inside Out Dorset Festival and Arts Bournemouth for the Arts by the Sea Festival.*

KEY PERSONNEL: Lorna Rees (Artistic Director, Director, and Performer); Kate Hazel (Producer, Alchemy Productions); Robert Lee (Composer)

MIN. SPACE REQUIRED:	30 m x 30 m x 2 m of diggable grassland
No. OF PEOPLE ON ROAD:	6
WRITTEN / SPOKEN TEXT:	Yes
CAN BE EASILY TRANSLATED INTO OTHER LANGUAGES:	Yes

THE HOUSE

DANCE / DIGITAL / MUSIC / SPECTACLE

A GREENWICH+DOCKLANDS INTERNATIONAL FESTIVAL PRODUCTION

PRESENTED IN ASSOCIATION WITH ROYAL MUSEUMS GREENWICH

+44 (0)20 8305 1818

bradley@festival.org

www.festival.org



35'

UK

This specially commissioned spectacle marks the 400th anniversary of The Queen's House and its forthcoming reopening this year. The production re-imagines Britain's first classical building as an inclusive, universal house for all people, for all time. Using the inspiration of the architect of the Queen's House, Inigo Jones, *The House* reflects on the way in which civilisations emerge from the ruins of what has gone before, combining video projection, music, hip hop/contemporary dance, large scale staging and narration. The production can be adapted for other sites and buildings on request.

Led by Artistic Director Bradley Hemmings, Greenwich+Docklands Festivals (GDF) is a year round producing organisation which, in addition to GDIF, also develops and creates outdoor theatre projects, ceremonies and events in a variety of contexts. In addition to *The House*, this year GDF will create and produce a Paralympic Flame Ceremony entitled *The Seeds of Diversity* at Stoke Mandeville Stadium forming part of the build up to the Opening Ceremony of the Rio Paralympic Games. It will also be creating and producing the annual Liberty/National Paralympic Day celebrations in the Queen Elizabeth Olympic Park on 3 September.

Created and presented by GDIF in association with Royal Museums Greenwich

Supported by Arts Council England and Royal Borough of Greenwich as part of Royal Greenwich Festivals

KEY PERSONNEL:

Bradley Hemmings

Tal Rosner

Tony Adigun & Lisa Hood, Avant Garde Dance Company

Dan Jones

Pan.Optikum

Rebecca Brower

Sharon D. Clarke and Sir Ian McKellen

Sally Atkins

Artistic Director and Writer

Video Design

Choreography

Composer

Performance and aerial structures

Costume and Scenic Design

Narrators

Producer



HIGHLY SPRUNG PERFORMANCE

PHYSICAL THEATRE /
MOBILE AERIAL / DANCE

SARAH WORTH | ARTISTIC DIRECTOR

UNIT 4, SANDY LANE BUSINESS PARK, SANDY LANE, COVENTRY, CV1 4DQ

+44 (0)781 026 3355

sarah@highlysprungperformance.co.uk

www.highlysprungperformance.co.uk



UK

Highly Sprung Performance is a Midlands-based physical performance company producing inspiring performance and participatory projects that attract new and young audiences, providing innovative and original projects that involve, engage and excite. The company was founded in 2000 and has an impressive record of public productions, both in arts venues and across UK festivals and events.

URBAN ASTRONAUT

Urban Astronaut provides a glimpse of a future that might be...where problems surrounding air pollution have grown to a crisis point; is there any way back? Combining stunning design and a unique travelling flying machine with simple storytelling and a moving dance performance, *Urban Astronaut* searches for a solution to the environmental disaster that is present in our near future.

Commissioned by Without Walls and Ageas Salisbury International Arts Festival, Norfolk & Norwich Festival and Out There International Festival of Circus & Street Arts.

Commissioned by Gone in 20 Minutes.

KEY PERSONNEL: Sarah Worth (Director); Mark Worth (Writer)

MIN. SPACE REQUIRED:	10 m x 8 m x 6 m
No. OF PEOPLE ON ROAD:	6
WRITTEN / SPOKEN TEXT:	Yes
CAN BE EASILY TRANSLATED INTO OTHER LANGUAGES:	Yes

HIKAPEE

CIRCUS / THEATRE / INSTALLATION

BRYONY LIVESEY | ARTISTIC DIRECTOR
5 THE ISLAND, THAMES DITTON, SURREY, KT7 0SH
+44 (0)755 764 4606
hikapeetheatre@gmail.com
www.hikapeetheatre.com



UK

25'

Hikapee combines circus and theatre to create accessible story telling performances for families. The company was founded by aerial artists Bryony Livesey (AirCRAFT Circus; Open Book) and Edd Casey (NoFit State Circus; The Same, But Different).

HOME

HOME is a new outdoor circus performance that explores ideas of home, homelessness, and our intrinsic desire to find a place we can call our own. This family orientated show weaves together slapstick comedy with breath-taking aerial and acrobatics, and culminates in the creation of a 'house' - an open structure and installation for the audience to enter.

Commissioned by The Lyric, Latitude, GDIF and Watford Palace Theatre. HOME is being produced with the support of Theatre Delicatessen and with Grants For The Arts funding from Arts Council England.

KEY PERSONNEL: Bryony Livesey and Edd Casey (Artistic Directors); Roland Smith (Artistic Producer); Clare Fitzsimons (Touring Manager)

MIN. SPACE REQUIRED:	7 m x 7 m x 7 m
No. OF PEOPLE ON ROAD:	6
WRITTEN / SPOKEN TEXT:	Yes
CAN BE EASILY TRANSLATED INTO OTHER LANGUAGES:	Yes

HOW IT ENDED

PUPPETRY / MUSIC / STORYTELLING

EVA SAMPSON & TERESA BURNS | CO-DIRECTORS
1 CONWAY HOUSE, WATLING STREET, RADLETT, WD7 7AA
+44 (0)798 029 3035 / +44 (0)789 410 8811
eva@howitended.co.uk / teresa@howitended.co.uk
www.howitended.org



UK

How It Ended is a visually inventive theatre company based in the South East, jointly run by Co-Artistic Directors Eva Sampson and Teresa Burns.

How It Ended makes ambitious pieces of theatre that are youthful, contemporary and full of heart. Through original music and visual storytelling, the company work to excite young audiences and inspire the next generation of theatre makers.

THE LITTLE GARDENER

A heart-warming adaptation of Emily Hughes' popular children's book *The Little Gardener*.

Performed inside a large glass box, containing a real-life garden - How It Ended tell the story of a little gardener and the garden that meant everything to him. Will you help the little gardener bring his garden to life? This spellbinding show will melt your heart and get your hands dirty too!

*Presented by How It Ended in association with Scamp Theatre.
Commissioned by Lyric Hammersmith, GDIF, Watford Palace Theatre and Latitude.*

KEY PERSONNEL: Eva Sampson (Director); Teresa Burns (Dramaturg); Emily Hughes (Author and Illustrator); James Lewis (Designer); Andy Lawrence (Puppet Maker); Darren Clark (Composer); Peter Hobday (Actor/Puppeteer)

MIN. SPACE REQUIRED:	2 m x 3 m x 2.5 m
No. OF PEOPLE ON ROAD:	4
WRITTEN / SPOKEN TEXT:	Yes
CAN BE EASILY TRANSLATED INTO OTHER LANGUAGES:	Yes



JOLI VYANN

CIRCUS / DANCE / ACROBALANCE

JAN PATZKE | ARTISTIC DIRECTOR AND PERFORMER
8, FAIRLIE PARK, RINGWOOD, HANTS, BH24 1TU
+44 (0)792 106 1984
joliv Yann@gmail.com / janandolivia@gmail.com
www.joli-vyann.com



UK



Joli Vyann was created in 2012 by Olivia Quayle and Jan Patzke; individually they have worked internationally with many companies and choreographers. Joli Vyann integrates dance, circus and theatre in a unique and exciting way, pulling the audience into an imaginative and captivating experience. They have created three outdoor and two indoor shows, collaborating with The National Theatre, Florence Caillon & Jonathan Lunn.

LANCE MOI EN L'AIR

Lance Moi En L'air is about the sensitivity and connection between two people which brings about compatible contradictions. Can we be strong whilst relaxed? Heavy whilst light, grounded whilst levitated, submissive whilst in control, a mixture of strength and weakness, can we be dropped into the air? Humanity emerges and acrobatic prowess speaks between bodies.

*Commissioned by Without Walls, Out There International Festival of Circus & Street Arts and Hat Fair.
Co-commissioned by Bournemouth Arts by the Sea Festival and Bristol Harbour Festival.*

KEY PERSONNEL: Olivia Quayle and Jan Patzke (Artistic Directors and Performers); Florence Caillon (Choreographer)

MIN. SPACE REQUIRED:	6 m x 6 m x 4.5 m
No. OF PEOPLE ON ROAD:	2-3
WRITTEN / SPOKEN TEXT:	No
CAN BE EASILY TRANSLATED INTO OTHER LANGUAGES:	N/A



LES ENFANTS TERRIBLES

AERIAL / CIRCUS / PUPPETRY

JAMES SEAGER | PRODUCER

C/O THE ALBANY, DOUGLAS WAY, DEPTFORD, LONDON, SE8 4AG

+44 (0)208 692 0231 (ext. 284)

james@lesenfantsterribles.co.uk

www.lesenfantsterribles.co.uk



35'

UK

Run by Oliver Lansley and James Seager, the company is dedicated to creating original, innovative and exciting theatre. Known for striking visual aesthetics and innovative use of props, puppetry, and live music Les Enfants Terribles thrive on finding new ways of telling stories and immersing themselves and their audiences in the weird and wonderful worlds created by their shows.

THE FANTASTICAL FLYING EXPLORATORY LABORATORY

In a stand-alone 'side-quel' to the hugely successful *The Marvellous Imaginary Menagerie*, you're invited to follow Dr. Latitude and his team of misguided misfits on a global quest for adventure. Brought to life using a 'hot air balloon flying machine' that soars above our heads in spectacular fashion, this show is packed full of original music, puppetry, aerial and circus.

Commissioned by Without Walls, Greenwich+Docklands International Festival, Stockton International Riverside Festival, Norfolk & Norwich Festival and Just So Festival

KEY PERSONNEL: Oliver Lansley (Co-Writer and Artistic Director); James Seager (Producer); Anthony Spargo (Co-Writer)

MIN. SPACE REQUIRED:

6 m x 4 m x 10 m

No. OF PEOPLE ON ROAD:

7

WRITTEN / SPOKEN TEXT:

Yes

CAN BE EASILY TRANSLATED INTO OTHER LANGUAGES:

Yes



MIMBRE

THEATRE / AEROBATICS

SILVIA FRATELLI | ARTISTIC DIRECTOR

UNIT 1, ENERGY CENTRE, BOWLING GREEN WALK, LONDON, N1 6AL

+44 (0)781 465 0917

silvia@mimbre.co.uk

www.mimbre.co.uk



UK



Mimbre creates nuanced, breath-taking and highly-skilled acrobatic theatre. Intensely physical and highly accessible, building relationships with broad, non-traditional audiences and participants, creating unexpected moments in unusual spaces and reclaiming some beauty within the urban environment.

IF I COULD I WOULD

Mimbre uses acrobatics, movement, and humour in this new show, a physical re-imagination of a day which you could save, and fly home when the bus is late. Referencing popular culture from Mary Poppins, the Hulk and Super Girl, the performance considers the expectations of modern life and all the superpowers we ideally would need to get it all done.

KEY PERSONNEL: Lina Johannsson (Co-Artistic Director); Silvia Fratelli (Co-Artistic Director and Performer), Jana Jammal (Producer)

MIN. SPACE REQUIRED:	10 m x 10 m x 5 m
No. OF PEOPLE ON ROAD:	4
WRITTEN / SPOKEN TEXT:	No
CAN BE EASILY TRANSLATED INTO OTHER LANGUAGES:	N/A



MISS HIGH LEG KICK

PARTICIPATION / DANCE / FILM

FRANCESCA BAGLIONE | CREATOR AND PERFORMER
2 WALNUT CLOSE, BRIGHTON, BN1 6RW
+44 (0)795 820 4211
misshighlegkick@gmail.com
www.misshighlegkick.com / www.auditionproject.com



UK



Francesca Baglione (Miss High Leg Kick) is an established artist with extensive experience of creating large-scale outdoor work (e.g. *Fashion Bus* and *Promettes*) and innovative interactive pieces (*Duckie's* Olivier Award winning show *C'est Barbican.*) Miss Kick's work is marked by humour, a love of spectacle, dance, and the celebration of the everyday.

MISS HIGH LEG KICK'S AUDITION PROJECT

Join the chorus line for your big audition experience! Learn the dance steps of the audition scene from *A Chorus Line* (the 1985 film) - led by Miss Kick, Harold Offeh, Abi Cunliffe and Steve Nice. An hour of dance, rehearsal, and showing-off in leg-warmers, but without any disappointing outcomes – all will star in the final show! Event filmed by Richard DeDomenici. Open to all. Leotards not compulsory.

Supported by Without Walls and Arts Council England.

KEY PERSONNEL: Miss High Leg Kick (Creator); Anthony Roberts (Producer); Richard DeDomenici (Redux Director)

MIN. SPACE REQUIRED:	6 m x 4 m with space in front of the stage
No. OF PEOPLE ON ROAD:	5
WRITTEN / SPOKEN TEXT:	Yes
CAN BE EASILY TRANSLATED INTO OTHER LANGUAGES:	Yes



NEW ART CLUB

COMEDY / DANCE / THEATRE

GWEN VAN SPIJK | MANAGER

BUCKINGHAMS COTTAGE, CHURCH STREET, BARFORD ST MICHAEL, OX15 0UA

+44 (0)775 371 7562

gwen@newartclub.org

www.newartclub.org



UK



New Art Club's Tom Roden and Pete Shenton are pioneering makers of devised work that bridges dance, theatre, and comedy. Capering gleefully along the dividing line between lunacy and genius, their shows appeal to a broad spectrum of audiences. Established for over 15 years, the company tour small and mid-scale work and are regulars at the Edinburgh Fringe.

CAMPERVAN OF LOVE

A funny, magical, musical, dancing adventure for all the family, featuring a modified VW campervan. Through a series of surprising songs, dances and hilarious set pieces, the performers will explore the campervan's physical possibilities whilst engaging the audience in a Cupid and Psyche story that offers new perspectives on our notions of love.

Campervan of Love is produced by New Art Club and Dance Republic 2.

It is commissioned by Without Walls, SeaChange Arts and Pavilion Dance South West.

Sponsorship from Atlantis 39 and Hawkesfield, and funding from FEAST (funded by Cornwall Council and Arts Council England). Additional support is from Junction, Cambridge; 101 Outdoor Arts; Hay Studio; and De Montfort University.

KEY PERSONNEL: Pete Shenton and Tom Roden (Artistic Directors)

MIN. SPACE REQUIRED:	8 m x 5 m x 4 m
No. OF PEOPLE ON ROAD:	4
WRITTEN / SPOKEN TEXT:	Yes
CAN BE EASILY TRANSLATED INTO OTHER LANGUAGES:	Yes

NOFIT STATE CIRCUS & MOTIONHOUSE

CIRCUS / ACROBATICS / DANCE

CAMILLE BEAUMIER | PRODUCER & INTERNATIONAL RELATIONS (NOFIT STATE CIRCUS)

FOUR ELMS ROAD, CARDIFF, CF24 1LE / +44 (0)292 022 1330

camille@nofitstate.com / www.nofitstate.org

JO VALENTINE | PROGRAMME MANAGER (MOTIONHOUSE)

SPENCER YARD, LEAMINGTON SPA, CV31 3SY / +44 (0)192 688 7052

jo@motionhouse.co.uk / www.motionhouse.co.uk



UK



BLOCK is an exciting new collaboration between NoFit State Circus and Motionhouse. NoFit State Circus is the UK's leading contemporary circus company, creating poignant and poetic work using circus, live music, movement and innovative design. Motionhouse is an internationally acclaimed touring dance company, fusing athletic physicality, powerful narrative and digital imagery to produce shows that are exciting and enjoyable.

BLOCK

NoFit State Circus and Motionhouse bring together their unique styles in *BLOCK*. *BLOCK* is about living in the city, twenty oversized blocks are deconstructed and reformed into an infinite variety of shapes for the performers to play on and explore. What happens when circus and dance collide – when they converge and blend into one another?

Commissioned by Without Walls, Stockton International Riverside Festival, Norfolk & Norwich Festival and Out There International Festival of Circus & Street Arts.

Co-production Archaos, Pôle National des Arts du Cirque Méditerranée and Le Citron Jaune, Centre National des Arts de la Rue.

KEY PERSONNEL: Louise Richards (Executive Director, Motionhouse); Kevin Finnan (Artistic Director, Motionhouse); Ali Williams (Creative Producer, NoFit State); Paul Evans (Circus Director, NoFit State); Jo Valentine (Programme Manager, Motionhouse).

MIN. SPACE REQUIRED:

8 m x 8 m x 8.5 m

No. OF PEOPLE ON ROAD:

9

WRITTEN / SPOKEN TEXT:

No

CAN BE EASILY TRANSLATED INTO OTHER LANGUAGES:

N/A



OLIVIER GROSSETÊTE

INSTALLATION / CRAFT PARTICIPATION

MURIEL CHARPENTIER | ADMINISTRATION & PRODUCTION

9, RUE DU POIRIER 13002 MARSEILLE

+33 (0)770 183 820

prod-grossetete@netcourrier.com

www.documentsdartistes.org/artistes/grossetete/repro.html



FR

Olivier Grossetête is a visual artist who lives and works in Marseille. He built his work around the recovery of everyday objects, playing with words, shapes, weight, volume, and materials. It tries to render these elements in the universe of fiction and dreams.

THE PEOPLE BUILD

Members of the public will serve as the building crew for a monumental cardboard structure using only human power, imagination and at least 1000 cardboard boxes. The project is the brainchild of Olivier Grossetête and churches, castle turrets and columns are among his previous cardboard creations - all of which are flattened the day they've been lovingly erected.

Part of a season of Arts and Culture hosted by Foundation for FutureLondon

KEY PERSONNEL: Olivier Grossetête (Creator)

MIN. SPACE REQUIRED:	30 m x 30 m; variable height
No. OF PEOPLE ON ROAD:	3
WRITTEN / SPOKEN TEXT:	No
CAN BE EASILY TRANSLATED INTO OTHER LANGUAGES:	N/A



PUPPETS WITH GUTS

PUPPETRY / PHYSICAL THEATRE / SPECTACLE

IVAN THORLEY | ARTISTIC DIRECTOR
9 BRAILSFORD ROAD, LONDON, SW2 2TB
+44 (0)794 245 9451
mail@puppetswithguts.com
www.puppetswithguts.com



UK



Puppets With Guts (PWG) is a big puppet theatre company based in West London and presents cutting-edge, interactive and socially aware spectacles. PWG company members have worked on some of the biggest puppet productions in the UK, including the 2012 Olympic Opening Ceremony, BBC, Warhorse and Paul McCartney’s music video for the song Appreciate.

CITIZEN SQUID

Citizen Squid is a medium scale interactive big puppet spectacle about compassion, displacement and transition for young people and family audiences. A gigantic squid has crawled into the high street - but how did it get there - and what will we do with it? *Citizen Squid* is a fun, highly visual, innovative and beguiling performance where audiences are enthralled, captivated and totally engaged. A project about compassion towards others and ourselves- when we fear the barbarians at the gate do we focus too much energy on finding someone to blame, and risk missing the bigger picture? Join us for a series of drifting boats and roaming tentacles trying to find their heart and a way home.

Originally commissioned by the Lyric Hammersmith Theatre and Watford Palace Theatre. Supported using public funding by the National Lottery through Arts Council England. Further developed with support from Wandsworth Grants Fund and ENABLE Leisure and Culture.

KEY PERSONNEL: Ivan Thorley (Artistic Director, Producer and Performer); Caroline Bowman (Designer, Lead Puppet Maker and Devisor); Priya Mistry, Iskandar Sharazuddin, Tom Wilton, Sam Clark, Roman Stefanski, Rebecca O’Brien, Peyvand Sadeghian (Co-Devisors and Performers); Nathan Curry (Consultant Director); Rae Howell, Daniel Kempson and Klaus Bru (Music Composition).

MIN. SPACE REQUIRED:	15 m x 20 m x 6 m
No. OF PEOPLE ON ROAD:	10
WRITTEN / SPOKEN TEXT:	Yes
CAN BE EASILY TRANSLATED INTO OTHER LANGUAGES:	Yes



RAY LEE

SOUND PERFORMANCE / INSTALLATION

SIMON CHATTERTON | PRODUCER

+44 (0)794 978 3174

simon@simonchatterton.co.uk

www.invisible-forces.com



UK



Award-winning artist and British Composer of the Year, Ray Lee is an artist who makes music that moves. Born out of a fascination for the invisible forces that surround us, his spectacular sound art works have transfixed and delighted audiences the world over.

CHORUS

A beautiful and mesmeric symphony of sound and light. Giant metal tripods tower above the audience. Atop the structures, rotating arms bearing loudspeakers create a pulsating, harmonic drone. Red lights at the end of the arms create the effect of swarms of fireflies, or of planets in motion while the combined chorus of the spinning speakers creates a harmonious whole.

N.B. This is not a public performance and is for delegates only.

A sound art project by Ray Lee, Chorus is produced by Simon Chatterton and commissioned by Newbury Corn Exchange, Brookes University and Oxford Contemporary Music. Chorus is funded by Arts Council England and PRS Foundation

KEY PERSONNEL: Ray Lee (Artist); Simon Chatterton (Producer)

MIN. SPACE REQUIRED:	25 m x 25 m
No. OF PEOPLE ON ROAD:	5
WRITTEN / SPOKEN TEXT:	No
CAN BE EASILY TRANSLATED INTO OTHER LANGUAGES:	N/A



SWING ZAZOU

MUSIC

MARK POINTING | MANAGER
23 HILLYFIELD, LEWES BN7 1LA
+48 (0)796 146 0002

info@swingzazou.co.uk | bookings@swingzazou.co.uk | press@swingzazou.co.uk
www.swingzazou.co.uk



UK

Electro Swing dance band Swing Zazou collide vintage 30's & 40's big band and Gypsy Swing with live-mixed electronics – a foot-stomping recipe of soaring hot-swingin' licks, driving beats, swing-scat vocals and vintage harmonies creating the fully-charged and irresistible sound of live Electro Swing.

SWING ZAZOU

Expect to hear a kicking up-tempo live show with a full clarinet-led live band of trumpet, violin, guitar, double-bass, drums and live electronics... A driving toe-tapping vintage Swing sound, dragged through the decades and into the new Swing Club scene.

From original Electro Swing songs to covers of back-in-the-day classics, Swing Zazou creates a modern Swing party to wear out the soles of your spats!

KEY PERSONNEL: Mark Pointing (Musical Director/Manager); Keith Ellis (Musical Director).
Band members: Daddy K (Liquorice-stick); Marko (Glitter); Nuala Nova (Squeakbox); DJ Don Dapper (Controls); Blisters (Horn); Harry Bo (Doghouse); Darrell Bones (Hides); Mat (Sound).

MIN. SPACE REQUIRED:	6 m x 4 m x 3 m
No. OF PEOPLE ON ROAD:	8
WRITTEN / SPOKEN TEXT:	Yes (only in visuals)
CAN BE EASILY TRANSLATED INTO OTHER LANGUAGES:	Yes



TEATR KTO

PROMENADE / MOBILE SHOW / STREET THEATRE

ULA SWALTEK | ASSISTANT & TOUR-MANAGER

UL. KROWODERSKA 74/13, 31-158 KRAKOW

+48 (0)126 338 947 / +48 (0)126 237 300 / +48 881 926 481 (on tour)

promocja@teatrktto.pl

www.teatrktto.pl



PO



60'

Established in 1977, Jerzy Zon and the Teatr KTO have created a theatrical phenomenon extraordinary in nature. Their art is contemporary, highly spectacular and strongly emotional, relating stories wrapped up in customs and morals. Facing the magical and exotic worlds of memories as well as the world of contemporary brutality, all of it is truly convincing, moving and unlike anything else.

PEREGRINUS

This emotionally compelling performance from one of Poland's leading theatre companies is inspired by TS Eliot's "The Hollow Men". It tells a familiar 21st century story, with a cast of 9 performers wearing striking masks as they embark on a journey through an ordinary working day.

KEY PERSONNEL: Spitfire Company (mask concept); Joanna Jaśko-Sroka (masks design); Eryk Makohon (stage movement and choreography); Jerzy Zon (script, music selection and stage direction)

MIN. SPACE REQUIRED: 700 m long route with two 10 m x 10 m areas for static performances

No. OF PEOPLE ON ROAD: 12

WRITTEN / SPOKEN TEXT: No

CAN BE EASILY TRANSLATED INTO OTHER LANGUAGES: N/A



TOMBS CREATIUS

INTERACTIVE INSTALLATION / GAMING

PEPPE CANNATA | MANAGER

C/ CASTELL 34, 25250 BELLPUIG (LLEIDA)

+34 657 143 177

production@tombscreatus.com

www.tombscreatus.com



CAT



ES



Tombs Creatius thinks up, designs and builds exceptional installations out of wood, for people of all ages. For Tombs Creatius, the streets are a place to play, a place to socialise, and a place to have fun.

THE STRANGE TRAVEL OF MR. TONET

Explore Senyor Tonet's fascinating world of sound, light and movement! Tombs Creatius beautifully wooden constructions tell the vivid stories of Mr. Tonet's travels, through a series of nine interactive games. Each game is attached to a box, each box is a story, and each story a creature built using robotics, light and sound. Pay close attention – there is only one Mr. Tonet!

KEY PERSONNEL: Toni Tomàs (Author); Carles Porta (Art Direction); Tombs Creatius (Production)

MIN. SPACE REQUIRED:	300 m ²
No. OF PEOPLE ON ROAD:	2
WRITTEN / SPOKEN TEXT:	Yes
CAN BE EASILY TRANSLATED INTO OTHER LANGUAGES:	Yes



ULIK PRODUCTION

URBAN INDUSTRIAL COMEDY

ANJA BRANDT, RUDI RENNER AGENCY | AGENT
AM BREMSFELD 2, 51399 BURSCHIED
+49 (0)217 474 6531
ab@rudi-renner.de
www.rudi-renner.de



DE

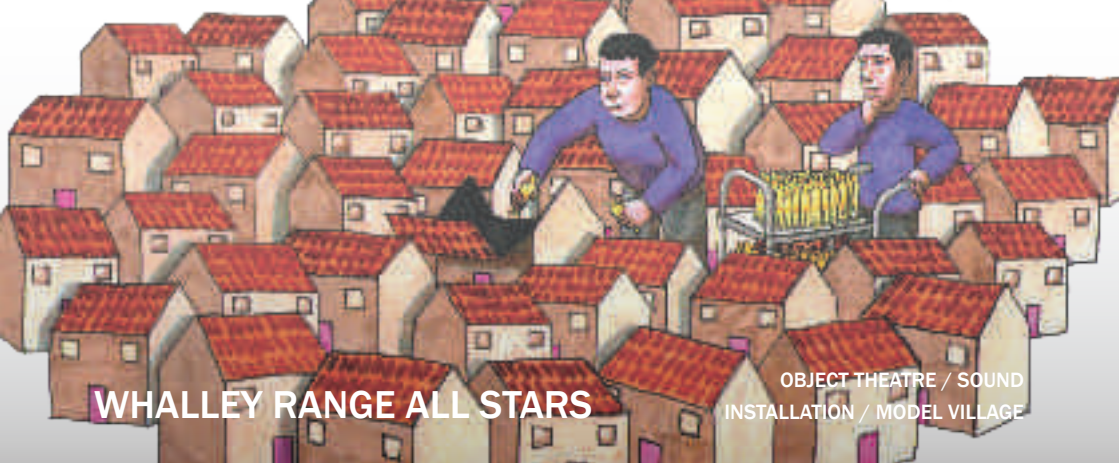
For more than 20 years, UliK has been an entertainer, comedian, and clown. Yet he's also an ingenious inventor, show producer and stage director. His outlandish ideas have made him well-known far beyond the German borders.

ULIK ROBOTIK DRUMSHOW

A machine comes to life...UliK and his drum invite the robot to start a turbulent ride. This brand-new production is a combination of a wild rollercoaster ride and a drum show: a musical, humorous and visual highlight. *UliK Robotik* shows how perfectly man and machine can play together. Through the interactive game, the robot becomes human and turns the show into an extraordinary experience.

KEY PERSONNEL: Ulrich Kahlert (Performer and Inventor)

MIN. SPACE REQUIRED:	18 m x 18 m x 7 m
No. OF PEOPLE ON ROAD:	2
WRITTEN / SPOKEN TEXT:	No
CAN BE EASILY TRANSLATED INTO OTHER LANGUAGES:	N/A



WHALLEY RANGE ALL STARS

OBJECT THEATRE / SOUND
INSTALLATION / MODEL VILLAGE

EDWARD TAYLOR | ARTISTIC DIRECTOR
UNIT 5, BRITANNIA MILL, SAMUEL ST. BURY, BL9 6AW
+44 (0)771 890 0111
info@wras.org.uk
www.wras.org.uk



UK



Whalley Range All Stars is recognised nationally and internationally as one of the UK's leading street theatre companies, combining visual art with performance to create vivid, imaginative and intelligent productions and installations for outdoor festivals and events. Since forming in 1982, they have created over 70 different shows/installations/events/toured to 75 countries over 5 continents and won popular, artistic and critical acclaim for their vivid, imaginative work.

YE GODS

Ye Gods features a model town which occupies a 5m circle. Three performers tower over the proceedings like gods/figures of fate. They gradually bring this miniature town to life with a witty use of objects that are placed inside buildings and which trigger appropriate sound effects. HOWEVER, all is not rosy in this world.

Funded by the Arts Council Grants for the Arts. Supported by the Boo, Waterfoot, and Newbury 101 Creation Space.

KEY PERSONNEL: Edward Taylor and Sue Auty (Artistic Directors and Performers); Bryan Tweedle (Designer); Pete Finegan (Deviser and Performer); Clive Bell and Matt Wand (Musicians and Composers)

MIN. SPACE REQUIRED:	6 m x 6 m
No. OF PEOPLE ON ROAD:	3
WRITTEN / SPOKEN TEXT:	No
CAN BE EASILY TRANSLATED INTO OTHER LANGUAGES:	N/A

NOTES

ABOUT XTRAX

XTRAX supports inspirational outdoor performance, running projects, festivals, and showcases designed to promote innovative outdoor work from UK and international artists.

We run showcases that bring together hundreds of UK and international promoters to see the best new outdoor work.

We manage Without Walls, a commissioning and touring consortium for new and ambitious UK outdoor work. We also run the Without Walls Associate Touring Network, a touring network of 10 UK festivals.

We are the producers of Wired Aerial Theatre and manage their programme of indoor and outdoor work including the large-scale show *As The World Tipped* and new outdoor production *Slice*.

We run XTRAX ID, an online directory featuring 1000+ artists and promoters: xtrax.org.uk/directory

We manage Platform 4:UK, a new project designed to promote UK companies abroad and to open up new market opportunities internationally. Supported by Arts Council England, it is designed to build on XTRAX's existing showcase work and further help artists to make new international contacts.

To deliver this project, we are working with existing showcase partners, the Greenwich+Docklands International Festival and Out There Festival in Great Yarmouth; we have also been developing relationships with a number of street arts festivals in Europe and further afield, with a view to developing targeted initiatives designed to support the promotion and export of UK Street Arts in 2016 and 2017.

Platform 4:UK Events in 2016

- Tete-a-Tete, Rastatt, Germany, 24 – 29 May 2016
- Greenwich+Docklands International Festival, UK, 24 - 26 June 2016
- Theater op de Markt, Hasselt, Belgium, 11 – 14 August 2016
- Out There Festival, Great Yarmouth, UK 16 – 18 September 2016
- Festival Seoul and Performing Arts Market Seoul, South Korea, October 2016

More information about XTRAX projects and clients can be found at www.xtrax.org.uk or feel free to speak to a member of the team during the showcase weekend.

XTRAX,
51 Old Birley Street,
Hulme,
Manchester,
M15 5RF,
UK
Tel: +44(0)161 227 8383



