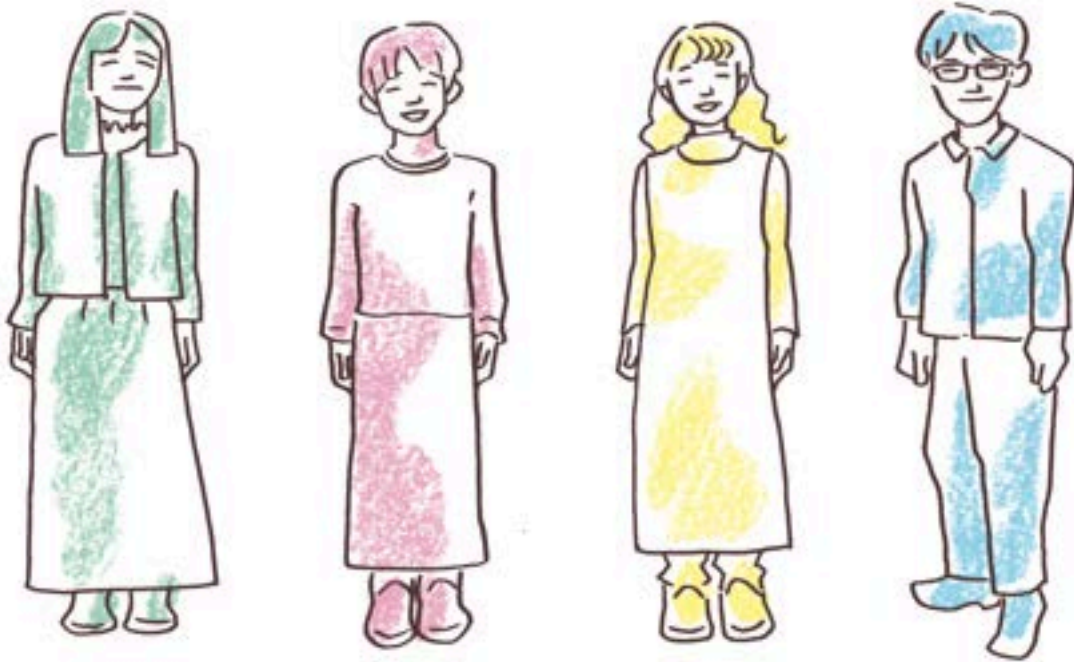


# Portfolio : Sononochi



If you have any questions, please feel free to contact us anytime.

[info@sononochi.com](mailto:info@sononochi.com)

# Artist Statement

A recurring theme in our works is,  
**“to notice and focus on what we usually overlook”**.

Sononochi's works are presented to each individual so they can feel their inner time, carefully confirm what is there and share it with others.  
In today's society, the speed of information is getting faster than ever.  
In order to observe the shape of time carefully, we need a device that allows us to feel the **“very slow flow of time.”**

Examples of such devices include moving the actors slowly, not using words and using original music. Using such devices, the audience will feel a change in their perception of time: a second will seem to extend to an hour approaching the grand scale of times of planets.

We sense time flowing in daily life, just as we grow old, as flowers are dead and bear fruit, and as the seasons change and circulate. Autumn has come and winter will be here soon. But we don't realize it the moment winter begins. All things appear before we know of it, and disappear before we know of it.

In Buddhist philosophy, this will be called “Shogyo Mujo”.  
It means, **all things change and nothing lasts forever.**  
We believe this also represents the beauty of the performing arts.  
All happens in a fleeting moment and will soon disappear, but it was surely there.



# Landscape Theater

Our works fall under one of two varieties: a group of works we call “*Landscape Theater*” and another called “*Anata wa Kieru (You are disappearing)*”.

“Landscape Theater” is an outdoor performance series that has been staged in various local landscapes throughout Japan. The audience sits about 100 meters away from performers. Landscape Theater is performed with the daily life of each location in mind. A landscape is made of various random elements. Cars and buses may pass by, neighborhoods may walk around, birds may fly and the weather may change during the performance.

The performers and accompanying music are meant to remind the audience that human beings exist in nature; our interest lies not in the social aspect of people, but its natural existential aspect. By viewing a landscape as a piece of art, the audience will imagine various things– Invisible histories, memories and organic stories. The audience will likely discover their own subjective landscape through this experience.





# Anata wa Kieru (You are disappearing)

The next piece is the performance Anata wa Kieru (You are disappearing). This is performed inside buildings, usually in large vacant spaces like a former factory. This piece was made in collaboration with artist Robin Owings. She creates installations with used fabric materials, such as curtains or tablecloths.

Ice cubes and incense sticks are important elements of the performance, as they change shape and form along with the performance. Gradually, the ice melts and the incense burns out. In our daily life we tend to forget about the things that make up our lives. But when something disappears, it reminds us that it was there all along. The performance visualizes the time represented by each object in the space.

VIDEO: <https://youtu.be/766PhWO6kYc> (Digest) [https://youtu.be/ie\\_saiM1Bgc](https://youtu.be/ie_saiM1Bgc) (Full)



# Members



**Kazuyo Nakatani** (Director / Leader)



**Miho Fujiwara** (Performer)



**Hiroshi Watanabe** (Production Manager)



**Moe Nagasawa** (Production Manager)



## “Landscape theater Series 2024” Waiting for the wind



Selected for the 2024 Arts Aid KYOTO~ Kyoto City Collaborative Arts Support Program ~  
Venue: MushRoom Café, overlooking the Keihoku–Yamaguni region (Kyoto/JAPAN)

VIDEO: <https://studio.youtube.com/video/P6hk53DAhrQ/edit>



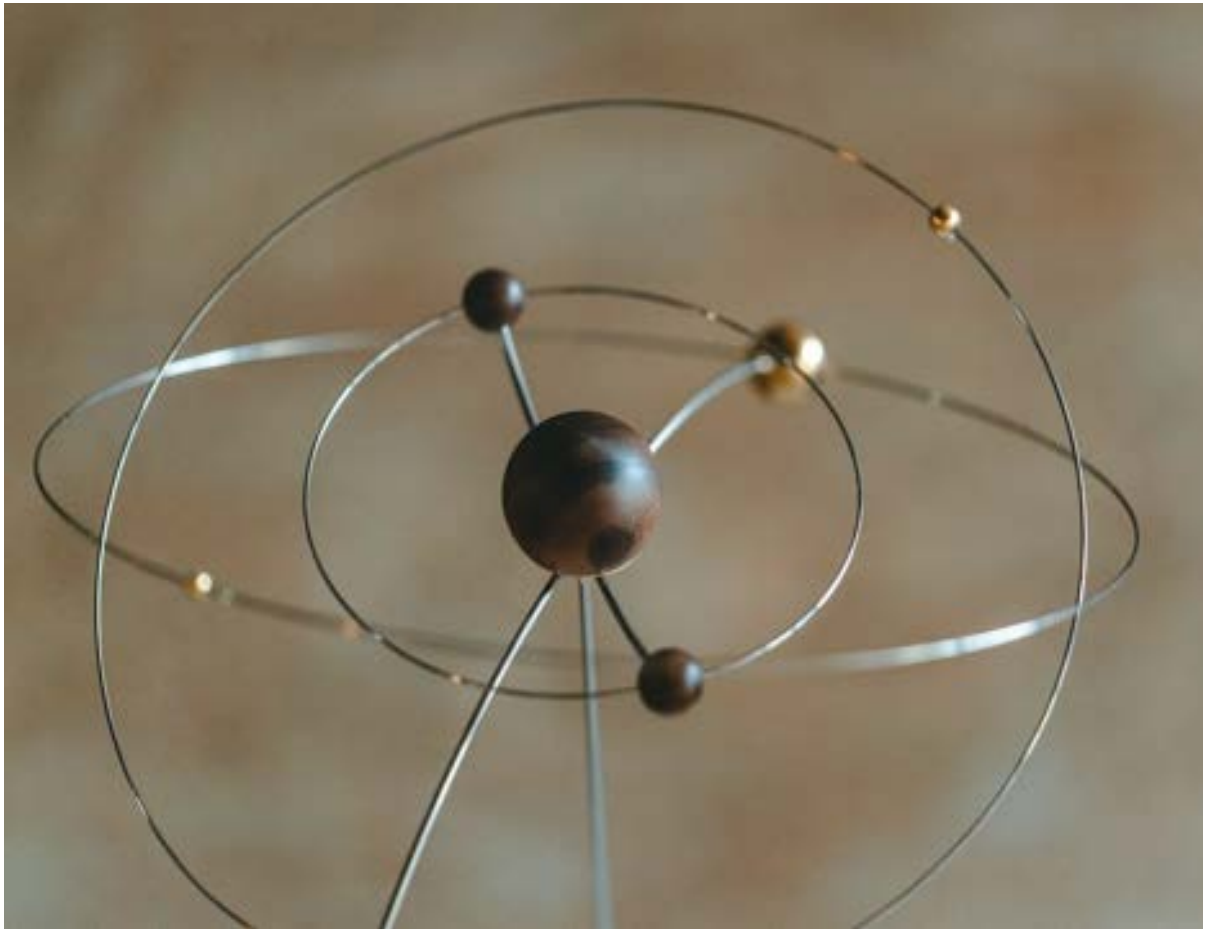
## 2025 Ambient Live & performance

“If I was the last person on this planet, will I continue this journey... |”



Venue: Mitsushima Atelier (Kyoto/JAPAN)

VIDEO: <https://youtu.be/qYvPGJCAfpM> (Full)  
<https://youtu.be/KcUVaPDn5I> (Trailer)



# Future Outlook



Sononochi is a performing arts group based in Kyoto, Japan since 2013. Through an expression method we call “Landscape Theater” we attempt to visualize the time latent within daily activities and landscapes.

By eliminating roles and dialogue that depict people as social beings, as commonly seen in theatrical works, and reinterpreting nature and the body as one unified entity, we make audiences conscious of the shifting environment and time. This creates a one-time performance, unique to that place and moment, that can only arise “here and now.”

Furthermore, the term “landscape” encompasses not only visual design and beauty, but also subjectively defined narratives, perceptible elements like wind, scent, and sound, and the activities of human life. To date, we have staged works in suburban spaces such as riverbanks, rural areas, shrine grounds, and mountainous regions, creating pieces that evoke the memories, culture, and physical sensations of those places.

Our current focus is on “what landscapes tell us, and where we stand.” The post-pandemic world continues to undergo significant change. Landscapes have layers where past and future, individual and community, nature and human intervention intersect. By experientially and physically sharing these multiple layers, audiences re-examine the world they inhabit through diverse perspectives. Our works emerge not within the performance itself, but within the process of interconnecting each audience member's unique experience and memory.

Underpinning our practice is the ethos of “connecting people and land through art.” While based in Japan, we have traveled to regions both domestically and internationally, aiming to create works through research into each place's unique history, customs, and natural environment. By visiting lands with different cultural spheres, communicating with people there, and sharing the thoughts and bodily sensations born from these encounters, we wish to share universal questions surrounding landscape.